

## RNF208 RABBIT PAB

货号: S219233

产品全名: RNF208 兔多抗

基因符号

**UNIPROT ID:** Q9H0X6 (Gene Accession - BC016958 )

背景: The function of this protein remains unknown.

抗原: Fusion protein of human RNF208

经过测试的应用: ELISA, WB, IHC

推荐稀释比: IHC: 50-100;WB: 200-1000;ELISA: 5000-10000

种属反应性: Rabbit

克隆性: Rabbit Polyclonal

亚型: Immunogen-specific rabbit IgG

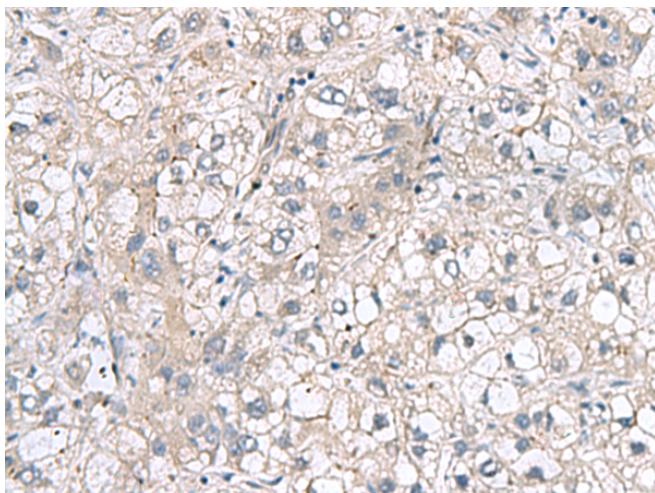
纯化: Antigen affinity purification

种属反应性: Human, Mouse

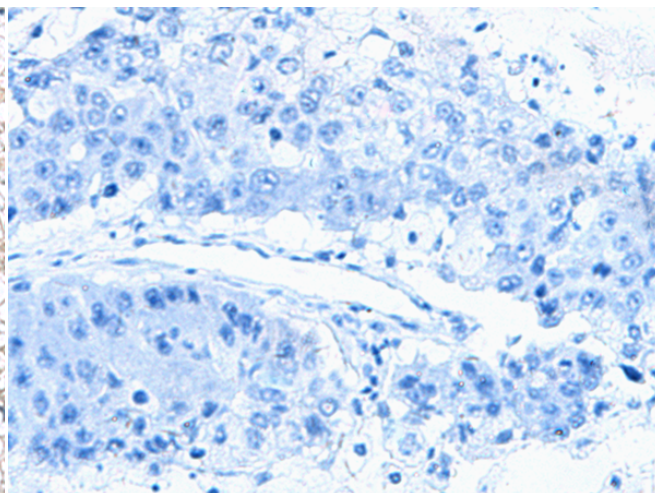
成分: PBS (without Mg<sup>2+</sup> and Ca<sup>2+</sup>), pH 7.4, 150 mM NaCl, 0.05% Sodium Azide and 40% glycerol

研究领域: Epigenetics and Nuclear Signaling

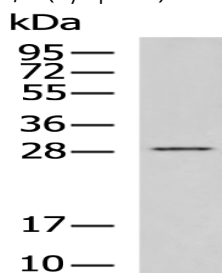
储存和运输: Store at -20°C. Avoid repeated freezing and thawing



Immunohistochemistry analysis of paraffin embedded Human liver cancer tissue using 219233(RNF208 Antibody) at a dilution of 1/65(Cytoplasm).



In comparison with the IHC on the left, the same paraffin-embedded Human liver cancer tissue is first treated with the fusion protein and then with 219233(Anti-RNF208 Antibody) at dilution 1/65.



Gel: 12%SDS-PAGE, Lysate: 40 µg;

Lane: MCF7 cell lysate;

Primary antibody: 219233(RNF208 Antibody) at dilution 1/400;

Secondary antibody: HRP-conjugated Goat anti rabbit IgG at 1/5000 dilution;

Exposure time: 2 minutes