

## RNF207 RABBIT PAB

货号: S222041

产品全名: RNF207 兔多抗

基因符号: Clorf188

**UNIPROT ID:** Q6ZRF8 (Gene Accession - NP\_997279)

**背景:** Plays a role in cardiac repolarization possibly by stabilizing membrane expression of the potassium channel KCNH2/HERG, or by assisting its synthesis, folding or export from the endoplasmic reticulum, in a heat shock protein-dependent manner.

**抗原:** Synthetic peptide of human RNF207

**经过测试的应用:** ELISA, IHC

**推荐稀释比:** IHC: 30-150; ELISA: 5000-10000

**种属反应性:** Rabbit

**克隆性:** Rabbit Polyclonal

**亚型:** Immunogen-specific rabbit IgG

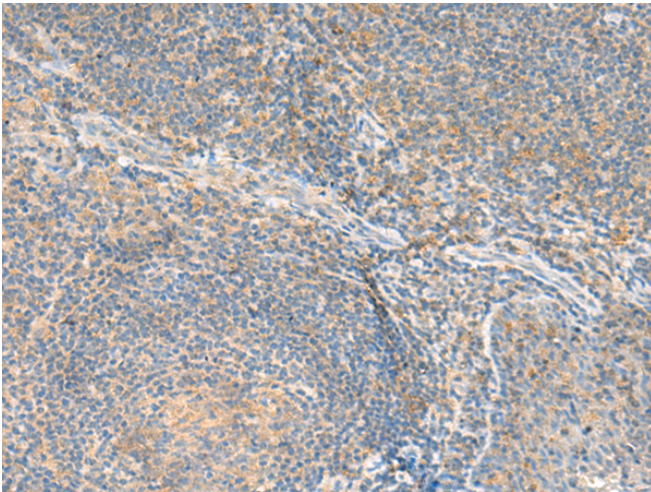
**纯化:** Antigen affinity purification

**种属反应性:** Human

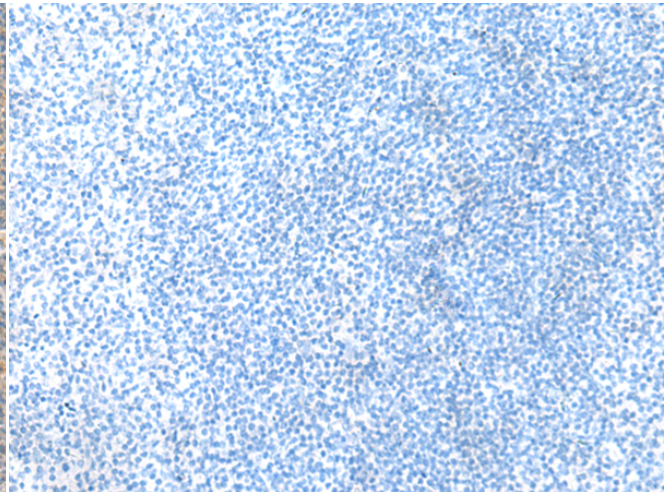
**成分:** PBS (without Mg<sup>2+</sup> and Ca<sup>2+</sup>), pH 7.4, 150 mM NaCl, 0.05% Sodium Azide and 40% glycerol

**研究领域:** Cell Biology

**储存和运输:** Store at -20°C. Avoid repeated freezing and thawing



Immunohistochemistry analysis of paraffin embedded Human tonsil tissue using 222041(RNF207 Antibody) at a dilution of 1/80(Cytoplasm).



In comparison with the IHC on the left, the same paraffin-embedded Human tonsil tissue is first treated with the synthetic peptide and then with 222041(Anti-RNF207 Antibody) at dilution 1/80.