

## RNASE1 RABBIT PAB

货号: S219216

产品全名: RNASE1 兔多抗

基因符号 RAC1; RIB1; RNS1

**UNIPROT ID:** P07998 (Gene Accession - BC005324 )

**背景:** This gene encodes a member of the pancreatic-type of secretory ribonucleases, a subset of the ribonuclease A superfamily. The encoded endonuclease cleaves internal phosphodiester RNA bonds on the 3'-side of pyrimidine bases. It prefers poly(C) as a substrate and hydrolyzes 2',3'-cyclic nucleotides, with a pH optimum near 8.0. The encoded protein is monomeric and more commonly acts to degrade ds-RNA over ss-RNA. Alternative splicing occurs at this locus and four transcript variants encoding the same protein have been identified.

**抗原:** Fusion protein of human RNASE1

**经过测试的应用:** ELISA, WB, IHC

**推荐稀释比:** IHC: 50-100;WB: 500-2000;ELISA: 5000-10000

**种属反应性:** Rabbit

**克隆性:** Rabbit Polyclonal

**亚型:** Immunogen-specific rabbit IgG

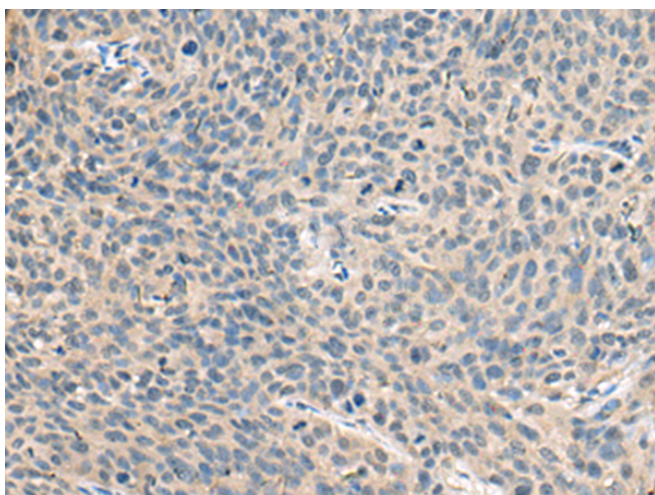
**纯化:** Antigen affinity purification

**种属反应性:** Human, Mouse, Rat

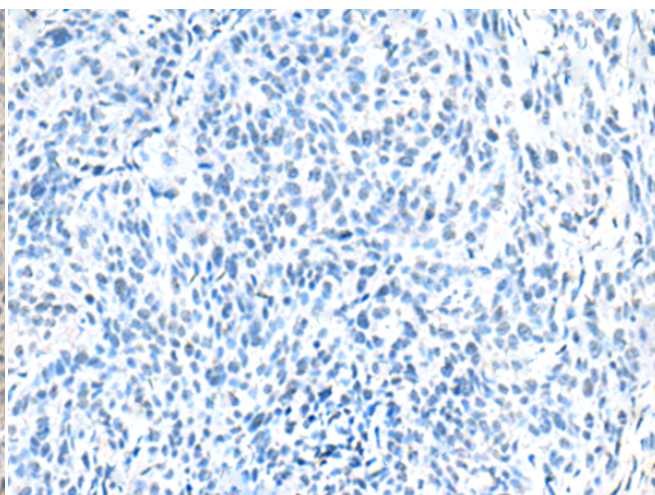
**成分:** PBS (without Mg<sup>2+</sup> and Ca<sup>2+</sup>), pH 7.4, 150 mM NaCl, 0.05% Sodium Azide and 40% glycerol

**研究领域:** Epigenetics and Nuclear Signaling

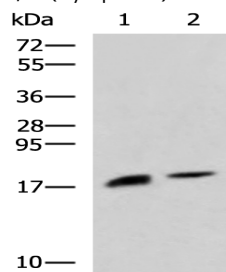
**储存和运输:** Store at -20°C. Avoid repeated freezing and thawing



Immunohistochemistry analysis of paraffin embedded Human cervical cancer tissue using 219216(RNASE1 Antibody) at a dilution of 1/50(Cytoplasm).



In comparison with the IHC on the left, the same paraffin-embedded Human cervical cancer tissue is first treated with the fusion protein and then with 219216(Anti-RNASE1 Antibody) at dilution 1/50.



Gel: 12%SDS-PAGE, Lysate: 40 µg;  
Lane 1-2: Rat pancreas tissue and Mouse pancreas tissue lysates;  
Primary antibody: 219216(RNASE1 Antibody) at dilution 1/650;  
Secondary antibody: HRP-conjugated Goat anti rabbit IgG at 1/5000 dilution;  
Exposure time: 50 seconds