

RNA POLYMERASE III SUBUNIT C7 RABBIT PAB

货号: N225071

产品全名: RNA Polymerase III Subunit C7 兔多抗

基因符号 POLR3G; DNA-directed RNA polymerase III subunit RPC7; RNA polymerase III subunit C7; DNA-directed RNA polymerase III subunit G; RNA polymerase III 32 kDa subunit; RPC32

UNIPROT ID: O15318

背景: DNA-dependent RNA polymerase catalyzes the transcription of DNA into RNA using the four ribonucleoside triphosphates as substrates.

抗原: The antiserum was produced against synthesized peptide derived from the Internal region of human POLR3G. AA range:151-200

经过测试的应用: WB,IHC-P,ELISA

推荐稀释比: WB: 1/500-1/1000 IHC: 1/50-1/100 ELISA: 1/10000

种属反应性: Rabbit

克隆性: Rabbit Polyclonal

分子量: Calculated MW: 26 kDa; Observed MW: 26 kDa

亚型: IgG

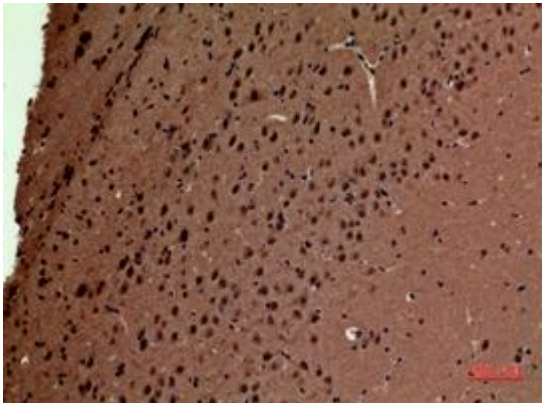
纯化: Affinity Purified

种属反应性: Human,Mouse

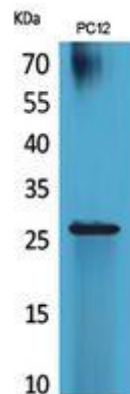
成分: PBS (without Mg²⁺ and Ca²⁺), pH 7.3 containing 50% glycerol, 0.5% BSA and 0.02% sodium azide

研究领域: Epigenetics and Nuclear Signaling

储存和运输: Store at -20°C. Avoid repeated freezing and thawing



Immunohistochemistry analysis of paraffin-embedded mouse brain using RNA Polymerase III Subunit C7 antibody. High-pressure and temperature Sodium Citrate pH 6.0 was used for antigen retrieval.



Western blot analysis of RNA Polymerase III Subunit C7 in PC-12 lysates using RNA Polymerase III Subunit C7 antibody.



Immunohistochemistry analysis of paraffin-embedded mouse brain using RNA Polymerase III Subunit C7 antibody. High-pressure and temperature Sodium Citrate pH 6.0 was used for antigen retrieval.