

## RNA POLYMERASE II SUBUNIT B1 RABBIT MAB

货号: N263136

产品全名: RNA Polymerase II Subunit B1 兔单克隆抗体

基因符号 POLR2A; POLR2; DNA-directed RNA polymerase II subunit RPB1; RNA polymerase II subunit B1; DNA-directed RNA polymerase II subunit A; DNA-directed RNA polymerase III largest subunit; RNA-directed RNA polymerase II subunit RPB1

**UNIPROT ID:** P24928

**背景:** During transcription elongation, Pol II moves on the template as the transcript elongates. Elongation is influenced by the phosphorylation status of the C-terminal domain (CTD) of Pol II largest subunit (RPB1), which serves as a platform for assembly of factors that regulate transcription initiation, elongation, termination and mRNA processing.

**抗原:** A synthetic peptide of human RNA polymerase II CTD repeat YSPTSPS

**经过测试的应用:** WB,IHC-F,IHC-P,ICC/IF,IP

**推荐稀释比:** WB: 1/500-1/1000 IHC: 1/50-1/100 IF: 1/50-1/200 IP: 1/20

**种属反应性:** Rabbit

**克隆性:** Rabbit Monoclonal

**克隆编号:** R06-8G7

**分子量:** Calculated MW: 217 kDa; Observed MW: 250 kDa

**亚型:** IgG

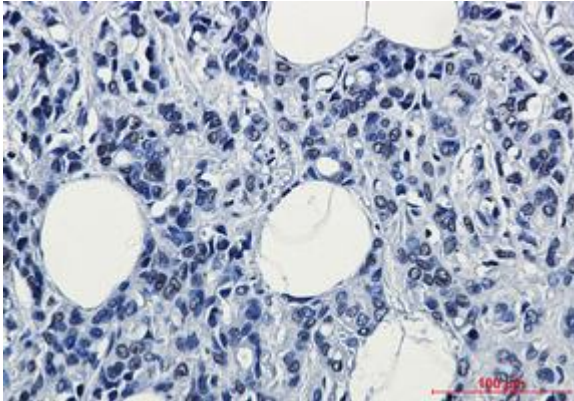
**纯化:** Affinity Purified

**种属反应性:** Human

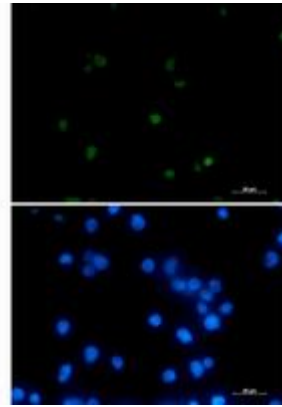
**成分:** PBS (without Mg<sup>2+</sup> and Ca<sup>2+</sup>), pH 7.3 containing 50% glycerol, 0.5% BSA and 0.02% sodium azide

**研究领域:** Epigenetics and Nuclear Signaling

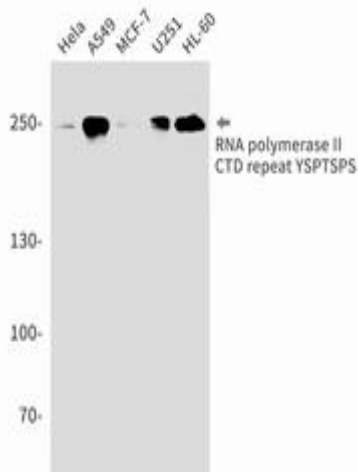
**储存和运输:** Store at -20°C. Avoid repeated freezing and thawing



Immunohistochemistry analysis of paraffin-embedded Human breast cancer tissue using RNA polymerase II CTD repeat YSPTSPS antibody. High-pressure and temperature Sodium Citrate pH 6.0 was used for antigen retrieval.



Immunocytochemistry analysis of RNA Polymerase II Subunit B1 (green) in CEM using RNA Polymerase II Subunit B1 antibody, and DAPI (blue).



Western blot analysis of RNA polymerase II CTD repeat YSPTSPS in HeLa, A549, MCF-7, U251, HL-60 lysates using RNA polymerase II CTD repeat YSPTSPS antibody.