

RMND5A RABBIT PAB

货号: S218871

产品全名: RMND5A 兔多抗

基因符号: CTLH; GID2; RMD5; GID2A; p44CTLH

UNIPROT ID: Q9H871 (Gene Accession - BC012165)

背景: The function of this protein remains unknown.

抗原: Fusion protein of human RMND5A

经过测试的应用: ELISA, IHC

推荐稀释比: IHC: 40-200; ELISA: 5000-10000

种属反应性: Rabbit

克隆性: Rabbit Polyclonal

亚型: Immunogen-specific rabbit IgG

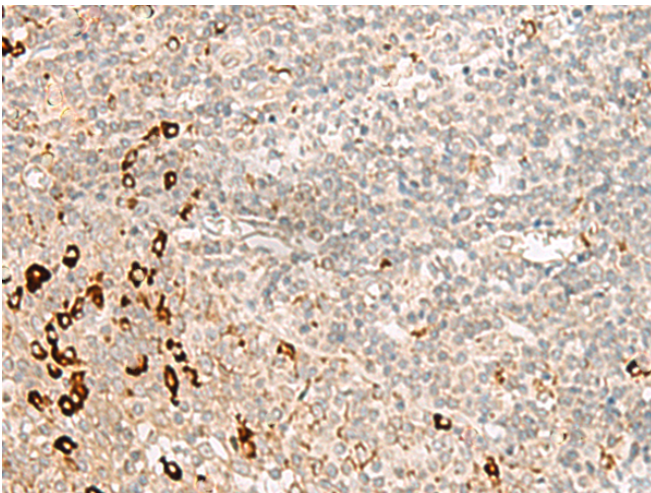
纯化: Antigen affinity purification

种属反应性: Human, Mouse

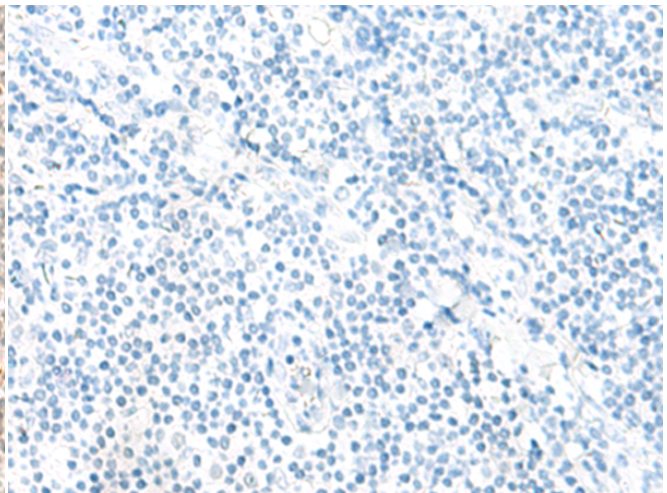
成分: PBS (without Mg²⁺ and Ca²⁺), pH 7.4, 150 mM NaCl, 0.05% Sodium Azide and 40% glycerol

研究领域: Signal Transduction

储存和运输: Store at -20°C. Avoid repeated freezing and thawing



Immunohistochemistry analysis of paraffin embedded Human tonsil tissue using 218871(RMND5A Antibody) at a dilution of 1/50(Cytoplasm).



In comparison with the IHC on the left, the same paraffin-embedded Human tonsil tissue is first treated with the fusion protein and then with 218871(Anti-RMND5A Antibody) at dilution 1/50.