

## RMC1 RABBIT PAB

货号: S218396

产品全名: RMC1 兔多抗

基因符号 MIC1; Mic-1; WDR98; C18orf8; HsT2591

**UNIPROT ID:** Q96DM3 (Gene Accession - BC002950)

背景: This gene encodes a colon cancer associated protein. [provided by RefSeq, Jan 2013]

抗原: Fusion protein of human RMC1

经过测试的应用: ELISA, IHC

推荐稀释比: IHC: 30-150; ELISA: 5000-10000

种属反应性: Rabbit

克隆性: Rabbit Polyclonal

亚型: Immunogen-specific rabbit IgG

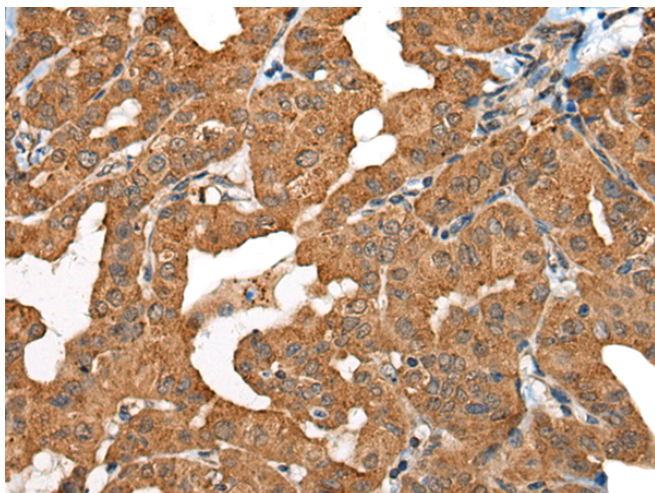
纯化: Antigen affinity purification

种属反应性: Human, Mouse

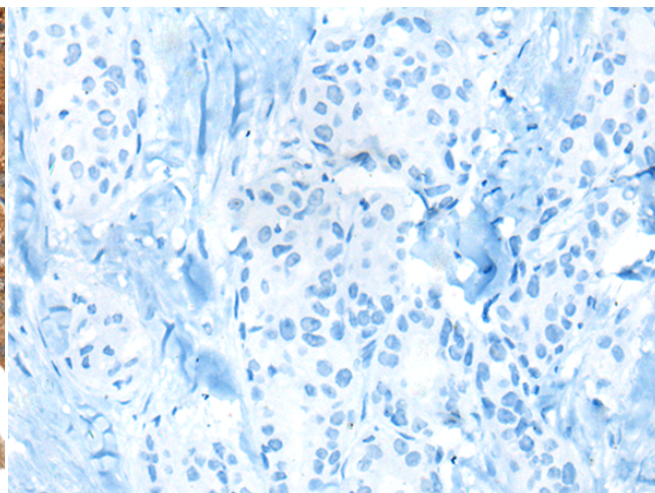
成分: PBS (without Mg<sup>2+</sup> and Ca<sup>2+</sup>), pH 7.4, 150 mM NaCl, 0.05% Sodium Azide and 40% glycerol

研究领域: Cell Biology

储存和运输: Store at -20°C. Avoid repeated freezing and thawing



Immunohistochemistry analysis of paraffin embedded Human thyroid cancer tissue using 218396(RMC1 Antibody) at a dilution of 1/25(Cytoplasm).



In comparison with the IHC on the left, the same paraffin-embedded Human thyroid cancer tissue is first treated with the fusion protein and then with 218396(Anti-RMC1 Antibody) at dilution 1/25.