

## RHOV RABBIT PAB

货号: S218140

产品全名: RHOV 兔多抗

基因符号: CHP; ARHV; WRCH2

**UNIPROT ID:** Q96L33 (Gene Accession - BC112945)

**背景:** Predicted to enable GTP binding activity and GTPase activity. Predicted to be involved in several processes, including Cdc42 protein signal transduction; cell projection assembly; and endocytosis. Predicted to be located in plasma membrane. [provided by Alliance of Genome Resources, Apr 2022]

**抗原:** Fusion protein of human RHOV

**经过测试的应用:** ELISA, IHC

**推荐稀释比:** IHC: 100-300; ELISA: 5000-10000

**种属反应性:** Rabbit

**克隆性:** Rabbit Polyclonal

**亚型:** Immunogen-specific rabbit IgG

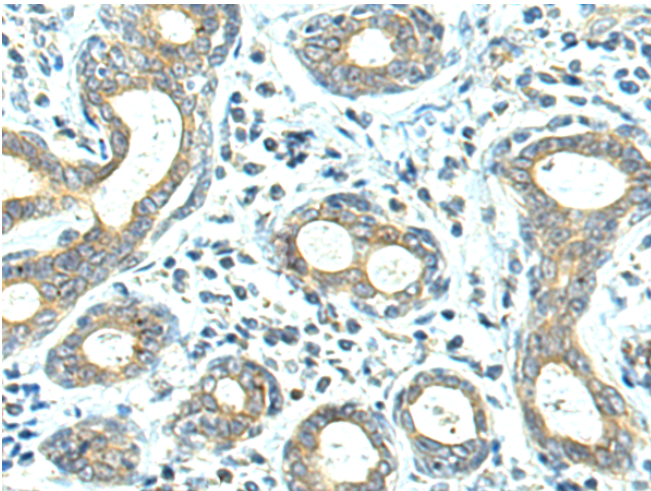
**纯化:** Antigen affinity purification

**种属反应性:** Human, Mouse, Rat

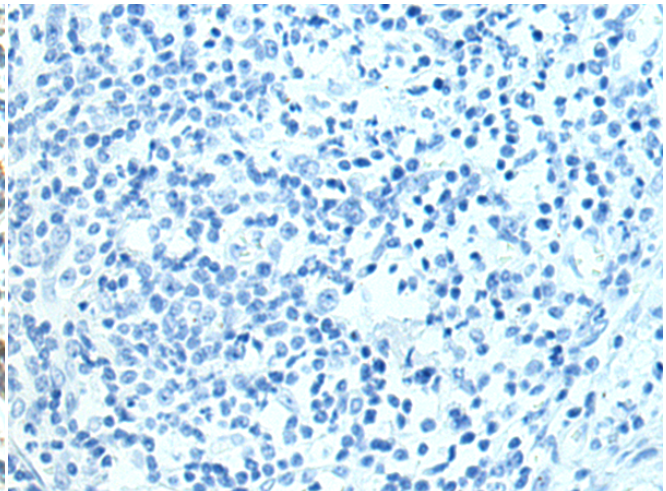
**成分:** PBS (without Mg<sup>2+</sup> and Ca<sup>2+</sup>), pH 7.4, 150 mM NaCl, 0.05% Sodium Azide and 40% glycerol

**研究领域:** Signal Transduction

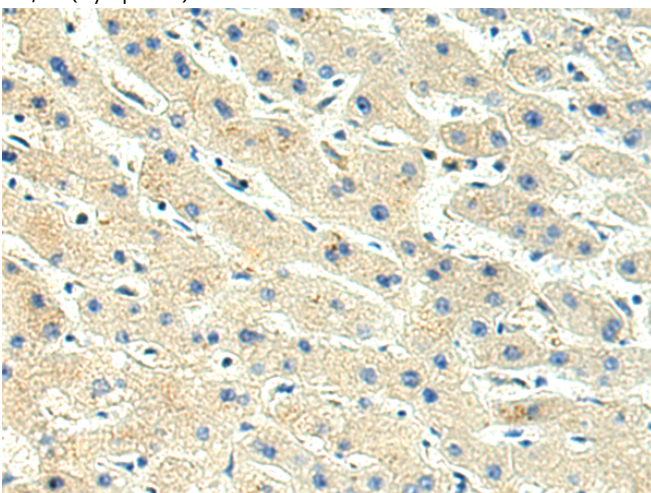
**储存和运输:** Store at -20°C. Avoid repeated freezing and thawing



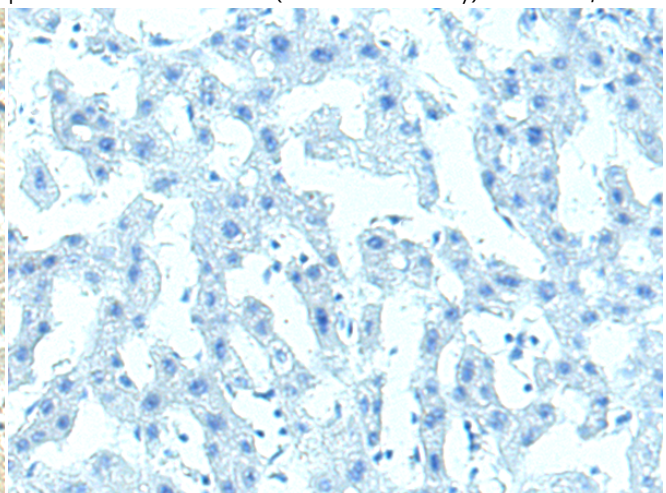
Immunohistochemistry analysis of paraffin embedded Human esophagus cancer tissue using 218140(RHOV Antibody) at a dilution of 1/130(Cytoplasm).



In comparison with the IHC on the left, the same paraffin-embedded Human esophagus cancer tissue is first treated with the fusion protein and then with 218140(Anti-RHOV Antibody) at dilution 1/130.



The image on the left is immunohistochemistry of paraffin-embedded Human liver cancer tissue using 218140(Anti-RHOV Antibody) at a dilution of 1/130.



In comparison with the IHC on the left, the same paraffin-embedded Human liver cancer tissue is first treated with fusion protein and then with D223803(Anti-RHOV Antibody) at dilution 1/130.



# Product Description

Pioneering GTPase and Oncogene Product Development since 2010

---