

RHOA RABBIT PAB

货号: N225463

产品全名: RhoA 兔多抗

基因符号 RHOA; ARH12; ARHA; RHO12; Transforming protein RhoA; Rho cDNA clone 12; h12

UNIPROT ID: P61586

背景: Rho A is a small G protein of the Rho family. Regulates a signal transduction pathway linking plasma membrane receptors to the assembly of focal adhesions and actin stress fibers.

抗原: The antiserum was produced against synthesized peptide derived from human RhoA. AA range:144-193

经过测试的应用: ICC/IF,WB,IHC-F,IHC-P,ELISA

推荐稀释比: WB: 1/500-1/1000 IHC: 1/50-1/100 IF: 1/50-1/200 ELISA: 1/10000

种属反应性: Rabbit

克隆性: Rabbit Polyclonal

分子量: Calculated MW: 22 kDa; Observed MW: 22 kDa

亚型: IgG

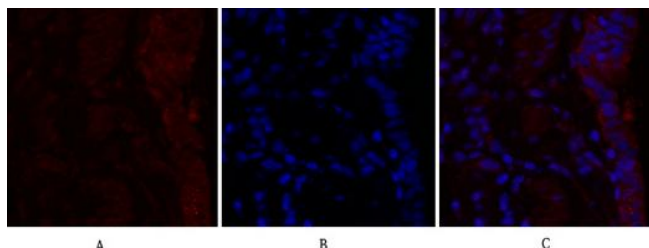
纯化: Affinity Purified

种属反应性: Human, Mouse and Rat

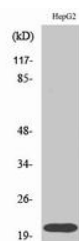
成分: PBS (without Mg²⁺ and Ca²⁺), pH 7.3 containing 50% glycerol, 0.5% BSA and 0.02% sodium azide

研究领域: Signal Transduction

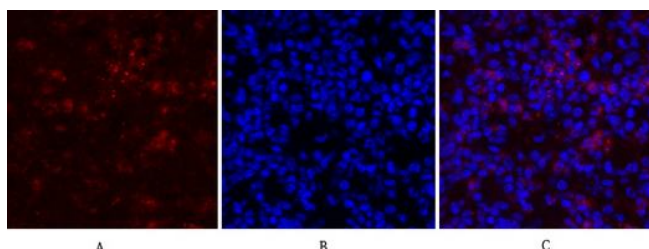
储存和运输: Store at -20°C. Avoid repeated freezing and thawing



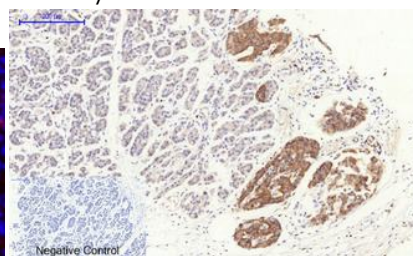
Immunofluorescence analysis of RhoA in rat lung using Rho A antibody (red), and DAPI (blue).



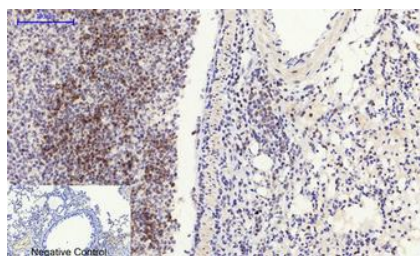
Western blot analysis of RhoA in HepG2 lysates using RhoA antibody.



Immunofluorescence analysis of RhoA in mouse lung using Rho A antibody (red), and DAPI (blue)



Immunohistochemistry analysis of paraffin-embedded Human stomach cancer tissue using Rho A antibody. High-pressure and temperature Sodium Citrate pH 6.0 was used for antigen retrieval. Negative control was used by secondary antibody only.



Immunohistochemistry analysis of paraffin-embedded mouse lung tissue using Rho A antibody. High-pressure and temperature Sodium Citrate pH 6.0 was used for antigen retrieval. Negative control was used by secondary antibody only.



Product Description

Pioneering GTPase and Oncogene Product Development since 2010
