

## RHCG RABBIT PAB

货号: S220853

产品全名: RHCG 兔多抗

基因符号 RHGK; PDRC2; C15orf6; SLC42A3

**UNIPROT ID:** Q9UBD6 (Gene Accession - NP\_057405)

背景: Functions as an electroneutral and bidirectional ammonium transporter. May regulate transepithelial ammonia secretion.

抗原: Synthetic peptide of human RHCG

经过测试的应用: ELISA, WB, IHC

推荐稀释比: IHC: 25-50;WB: 500-2000;ELISA: 5000-10000

种属反应性: Rabbit

克隆性: Rabbit Polyclonal

亚型: Immunogen-specific rabbit IgG

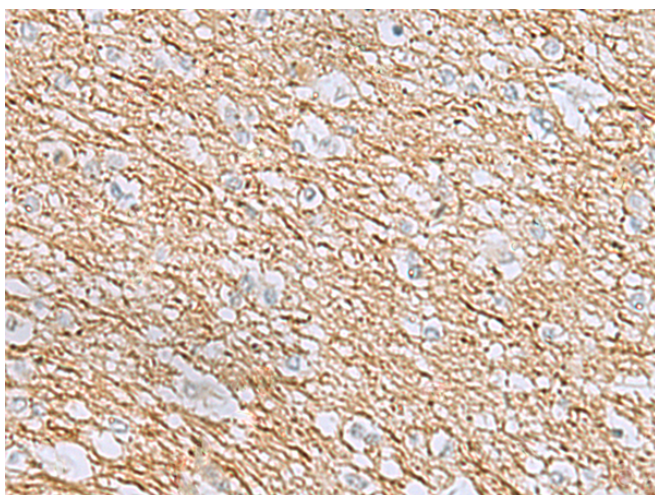
纯化: Antigen affinity purification

种属反应性: Human

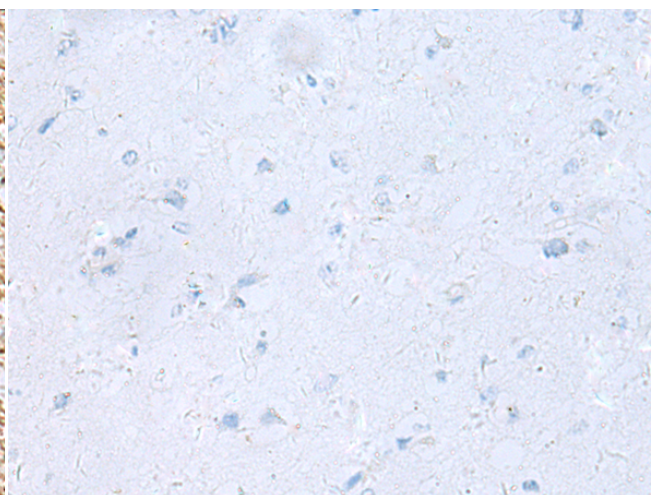
成分: PBS (without Mg<sup>2+</sup> and Ca<sup>2+</sup>), pH 7.4, 150 mM NaCl, 0.05% Sodium Azide and 40% glycerol

研究领域: Metabolism, Cancer, Cardiovascular

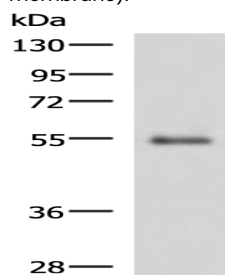
储存和运输: Store at -20°C. Avoid repeated freezing and thawing



Immunohistochemistry analysis of paraffin embedded Human brain tissue using 220853(RHCG Antibody) at a dilution of 1/40(Cell membrane).



In comparison with the IHC on the left, the same paraffin-embedded Human brain tissue is first treated with the synthetic peptide and then with 220853(Anti-RHCG Antibody) at dilution 1/40.



Gel: 8%SDS-PAGE, Lysate: 40 µg;

Lane: Human 2-3 grade invasive ductal breast tissue lysate;

Primary antibody: 220853(RHCG Antibody) at dilution 1/900;

Secondary antibody: HRP-conjugated Goat anti rabbit IgG at 1/5000 dilution;

Exposure time: 5 minutes