

## RGS22 RABBIT PAB

货号: S217759

产品全名: RGS22 兔多抗

基因符号: CT145; PRD-NY2

**UNIPROT ID:** Q8NE09 (Gene Accession - BC047060)

**背景:** RGS22 (regulator of G-protein signaling 22), also known as FLJ75004, PRD-NY2, FLJ40080, MGC102908 or DKFZp434I092, is a novel 1264 amino acid regulator of G-protein signaling specific to testis. RGS22 inhibits signal transduction and contains two isoforms as a result of alternative splicing. RGS22 is found in spermatogenic cells and Leydig cells, and may be involved in the translocation of GNA13 from the cytoplasm to the nucleus during spermiogenesis. RGS22 contains two RGS domains: RGS1 and RGS2, and the gene encoding RGS22 maps to human chromosome 8q22.2.

**抗原:** Fusion protein of human RGS22

**经过测试的应用:** ELISA, IHC

**推荐稀释比:** IHC: 25-100; ELISA: 2000-5000

**种属反应性:** Rabbit

**克隆性:** Rabbit Polyclonal

**亚型:** Immunogen-specific rabbit IgG

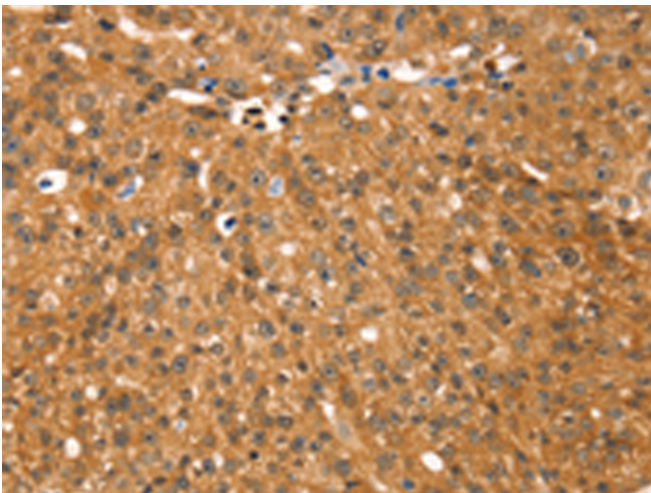
**纯化:** Antigen affinity purification

**种属反应性:** Human

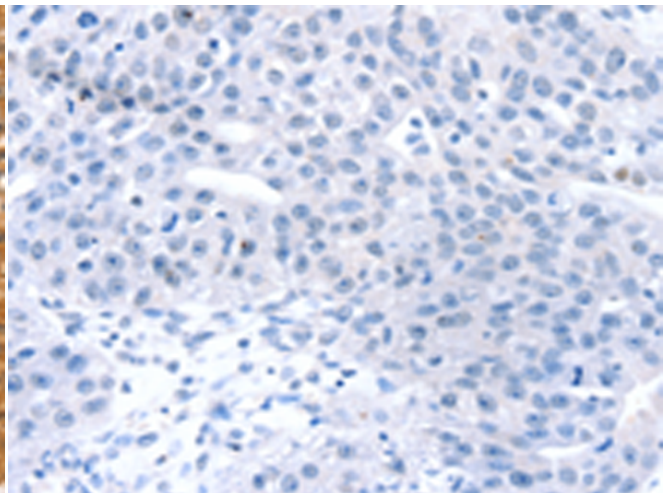
**成分:** PBS (without Mg<sup>2+</sup> and Ca<sup>2+</sup>), pH 7.4, 150 mM NaCl, 0.05% Sodium Azide and 40% glycerol

**研究领域:** Signal Transduction

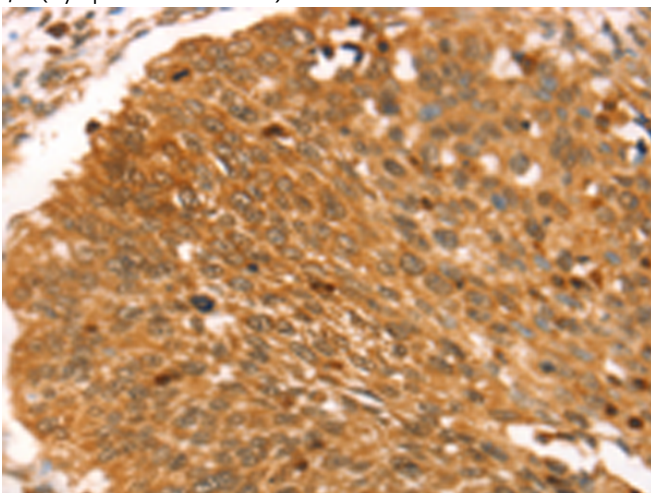
**储存和运输:** Store at -20°C. Avoid repeated freezing and thawing



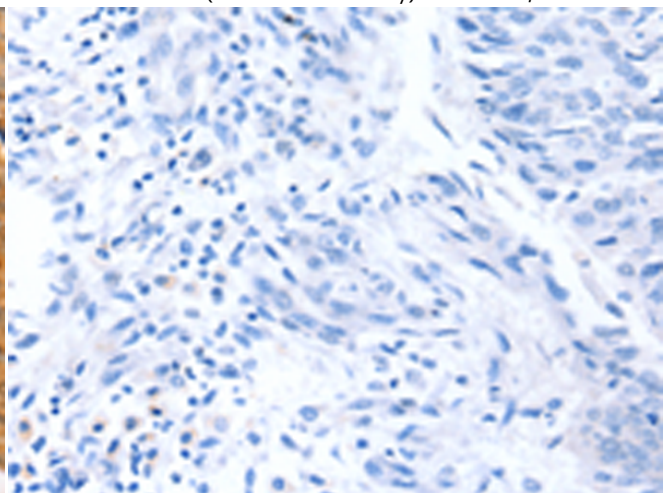
Immunohistochemistry analysis of paraffin embedded Human breast cancer tissue using 217759(RGS22 Antibody) at a dilution of 1/25(Cytoplasm and Nucleus).



In comparison with the IHC on the left, the same paraffin-embedded Human breast cancer tissue is first treated with the fusion protein and then with 217759(Anti-RGS22 Antibody) at dilution 1/25.



The image on the left is immunohistochemistry of paraffin-embedded Human lung cancer tissue using 217759(Anti-RGS22 Antibody) at a dilution of 1/25.



In comparison with the IHC on the left, the same paraffin-embedded Human lung cancer tissue is first treated with fusion protein and then with D223017(Anti-RGS22 Antibody) at dilution 1/25.



# Product Description

Pioneering GTPase and Oncogene Product Development since 2010

---