

RFLNA RABBIT PAB

货号: S218129

产品全名: RFLNA 兔多抗

基因符号: CFM2; FAM101A

UNIPROT ID: Q6ZTI6 (Gene Accession - BC141805)

背景: Involved in the regulation of the perinuclear actin network and nuclear shape through interaction with filamins. Plays an essential role in actin cytoskeleton formation in developing cartilaginous cells.

抗原: Fusion protein of human RFLNA

经过测试的应用: ELISA, IHC

推荐稀释比: IHC: 25-100; ELISA: 5000-10000

种属反应性: Rabbit

克隆性: Rabbit Polyclonal

亚型: Immunogen-specific rabbit IgG

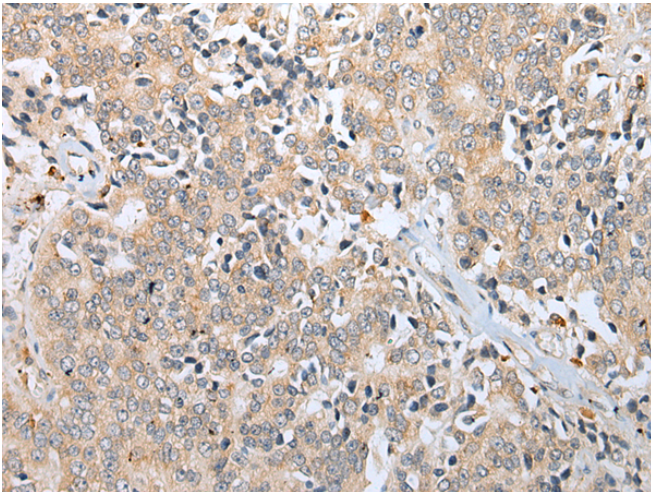
纯化: Antigen affinity purification

种属反应性: Human

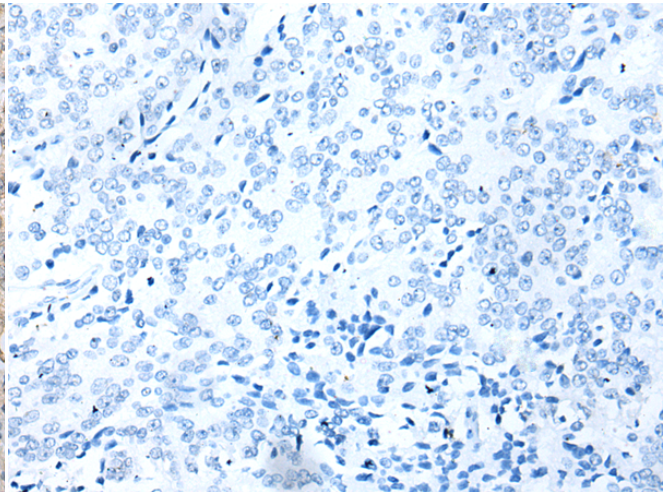
成分: PBS (without Mg²⁺ and Ca²⁺), pH 7.4, 150 mM NaCl, 0.05% Sodium Azide and 40% glycerol

研究领域: Cell Biology

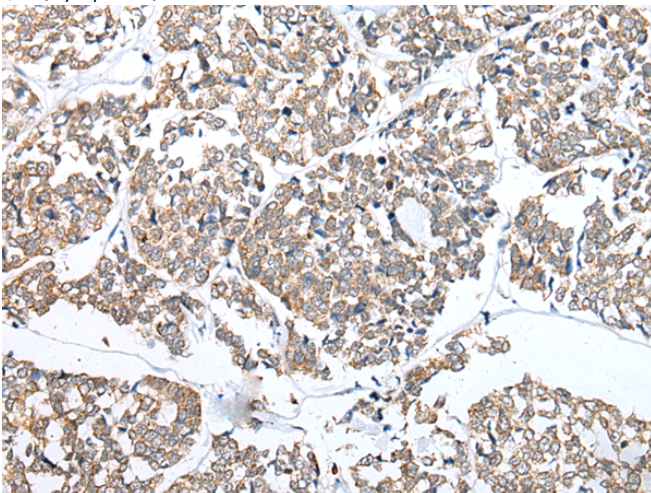
储存和运输: Store at -20°C. Avoid repeated freezing and thawing



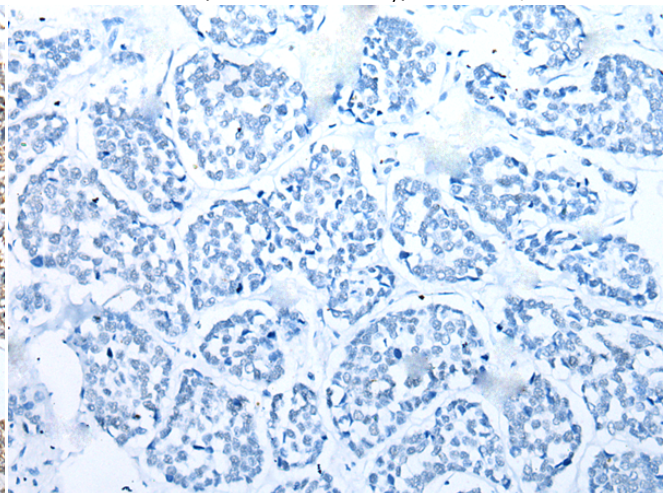
Immunohistochemistry analysis of paraffin embedded Human prostate cancer tissue using 218129(RFLNA Antibody) at a dilution of 1/30(Cytoplasm).



In comparison with the IHC on the left, the same paraffin-embedded Human prostate cancer tissue is first treated with the fusion protein and then with 218129(Anti-RFLNA Antibody) at dilution 1/30.



The image on the left is immunohistochemistry of paraffin-embedded Human esophagus cancer tissue using 218129(Anti-RFLNA Antibody) at a dilution of 1/30.



In comparison with the IHC on the left, the same paraffin-embedded Human esophagus cancer tissue is first treated with fusion protein and then with D223782(Anti-RFLNA Antibody) at dilution 1/30.



Product Description

Pioneering GTPase and Oncogene Product Development since 2010
