

RFK RABBIT PAB

货号: S218157

产品全名: RFK 兔多抗

基因符号: RIFK

UNIPROT ID: Q969G6 (Gene Accession - BC007069)

背景: Riboflavin kinase (RFK; EC 2.7.1.26) is an essential enzyme that catalyzes the phosphorylation of riboflavin (vitamin B2) to form flavin mononucleotide (FMN), an obligatory step in vitamin B2 utilization and flavin cofactor synthesis.

抗原: Fusion protein of human RFK

经过测试的应用: ELISA, WB, IHC

推荐稀释比: IHC: 50-200;WB: 500-2000;ELISA: 5000-10000

种属反应性: Rabbit

克隆性: Rabbit Polyclonal

亚型: Immunogen-specific rabbit IgG

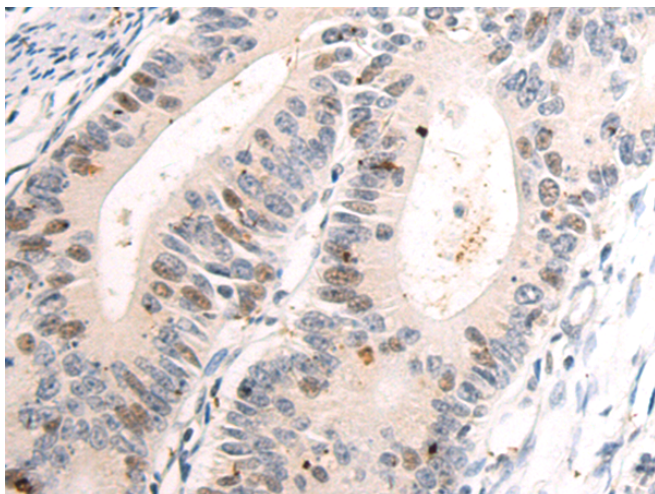
纯化: Antigen affinity purification

种属反应性: Human, Mouse

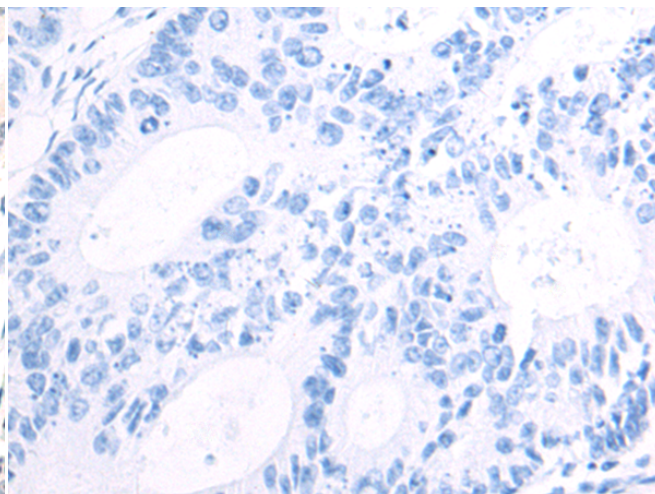
成分: PBS (without Mg²⁺ and Ca²⁺), pH 7.4, 150 mM NaCl, 0.05% Sodium Azide and 40% glycerol

研究领域: Metabolism

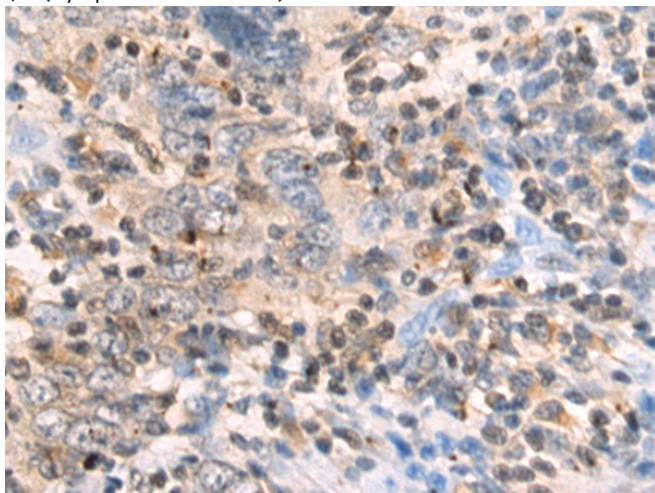
储存和运输: Store at -20°C. Avoid repeated freezing and thawing



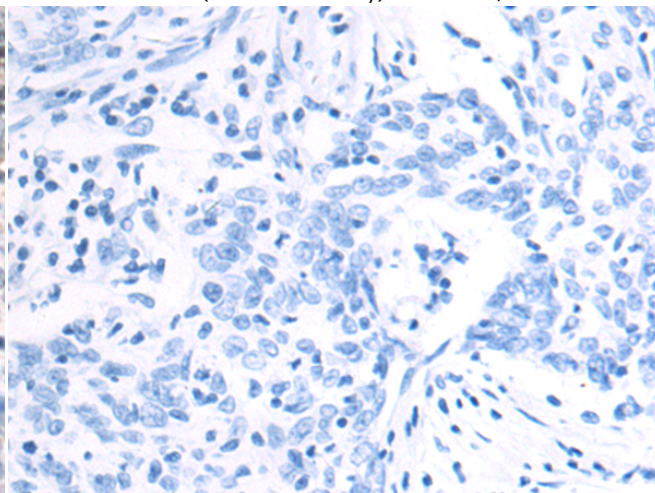
Immunohistochemistry analysis of paraffin embedded Human colorectal cancer tissue using 218157(RFK Antibody) at a dilution of 1/75(Cytoplasm and Nucleus).



In comparison with the IHC on the left, the same paraffin-embedded Human colorectal cancer tissue is first treated with the fusion protein and then with 218157(Anti-RFK Antibody) at dilution 1/75.

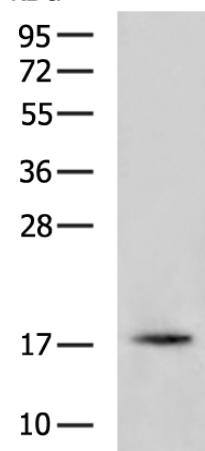


The image on the left is immunohistochemistry of paraffin-embedded Human esophagus cancer tissue using 218157(Anti-RFK Antibody) at a dilution of 1/75.



In comparison with the IHC on the left, the same paraffin-embedded Human esophagus cancer tissue is first treated with fusion protein and then with D223842(Anti-RFK Antibody) at dilution 1/75.

kDa



Gel: 12%SDS-PAGE, Lysate: 40 µg;
Lane: A549 cell lysate;
Primary antibody: 218157(RFK Antibody) at dilution 1/1000;
Secondary antibody: HRP-conjugated Goat anti rabbit IgG at 1/5000 dilution;
Exposure time: 30 seconds



Product Description

Pioneering GTPase and Oncogene Product Development since 2010
