

RFFL RABBIT PAB

货号: S217753

产品全名: RFFL 兔多抗

基因符号: CARP2; FRING; CARP-2; RNF189; RNF34L; RIFIFYLIN

UNIPROT ID: Q8WZ73 (Gene Accession - BC028424)

背景: Enables enzyme binding activity; p53 binding activity; and ubiquitin protein ligase activity. Involved in cellular protein metabolic process; negative regulation of cysteine-type endopeptidase activity involved in execution phase of apoptosis; and negative regulation of signal transduction. Located in endosome membrane and plasma membrane.

抗原: Fusion protein of human RFFL

经过测试的应用: ELISA, IHC

推荐稀释比: IHC: 50-200; ELISA: 5000-10000

种属反应性: Rabbit

克隆性: Rabbit Polyclonal

亚型: Immunogen-specific rabbit IgG

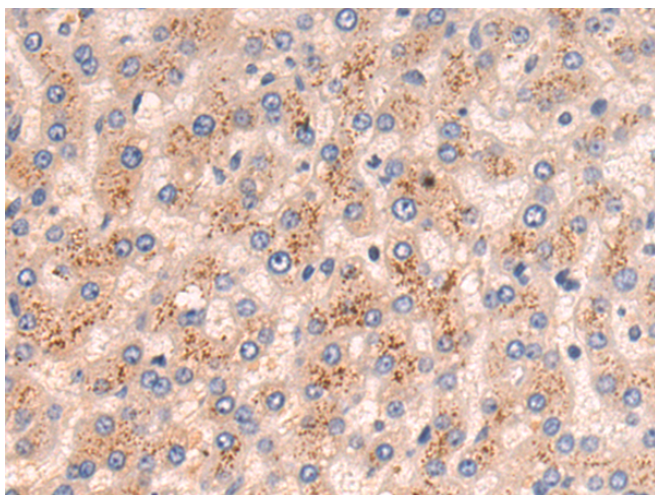
纯化: Antigen affinity purification

种属反应性: Human, Mouse, Rat

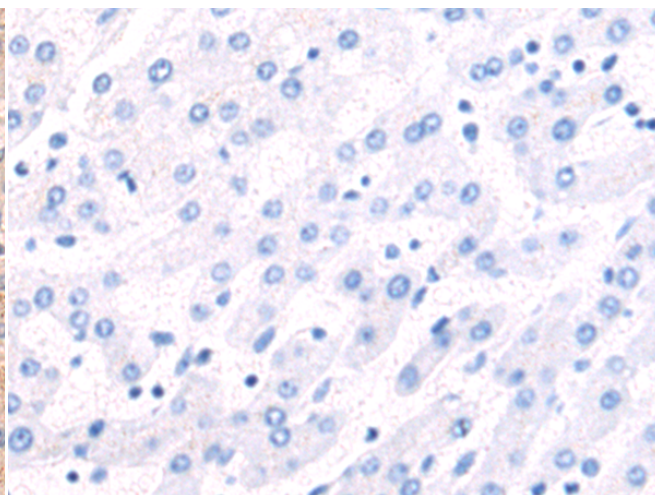
成分: PBS (without Mg²⁺ and Ca²⁺), pH 7.4, 150 mM NaCl, 0.05% Sodium Azide and 40% glycerol

研究领域: Signal Transduction, Epigenetics and Nuclear Signaling, Cancer, Cell Biology

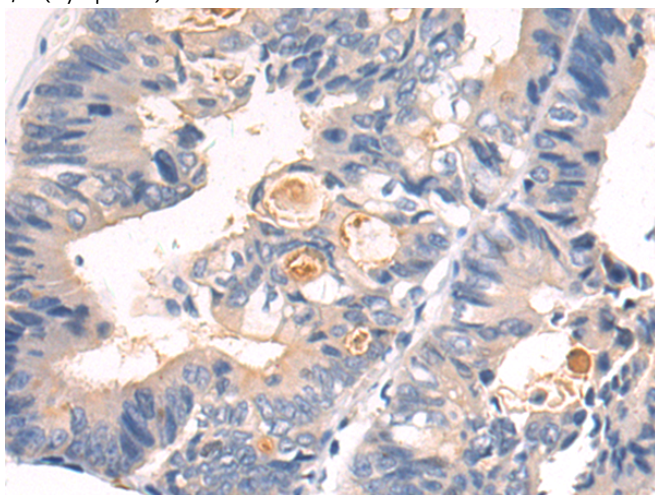
储存和运输: Store at -20°C. Avoid repeated freezing and thawing



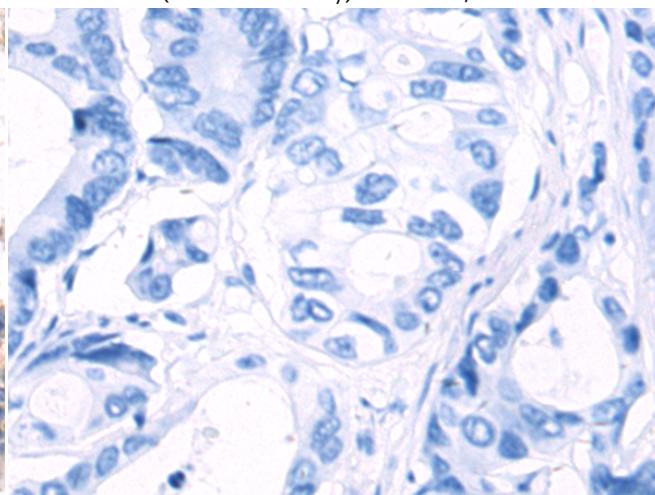
Immunohistochemistry analysis of paraffin embedded Human liver cancer tissue using 217753(RFFL Antibody) at a dilution of 1/70(Cytoplasm).



In comparison with the IHC on the left, the same paraffin-embedded Human liver cancer tissue is first treated with the fusion protein and then with 217753(Anti-RFFL Antibody) at dilution 1/70.



The image on the left is immunohistochemistry of paraffin-embedded Human colorectal cancer tissue using 217753(Anti-RFFL Antibody) at a dilution of 1/70.



In comparison with the IHC on the left, the same paraffin-embedded Human colorectal cancer tissue is first treated with fusion protein and then with D2230004(Anti-RFFL Antibody) at dilution 1/70.



Product Description

Pioneering GTPase and Oncogene Product Development since 2010
