

## REM1 RABBIT PAB

货号: S221838

产品全名: REM1 兔多抗

基因符号: GES; GD:REM

**UNIPROT ID:** O75628 (Gene Accession - NP\_054731)

**背景:** The protein encoded by this gene is a GTPase and member of the RAS-like GTP-binding protein family. The encoded protein is expressed in endothelial cells, where it promotes reorganization of the actin cytoskeleton and morphological changes in the cells.

**抗原:** Synthetic peptide of human REM1

**经过测试的应用:** ELISA, IHC

**推荐稀释比:** IHC: 20-100; ELISA: 5000-10000

**种属反应性:** Rabbit

**克隆性:** Rabbit Polyclonal

**亚型:** Immunogen-specific rabbit IgG

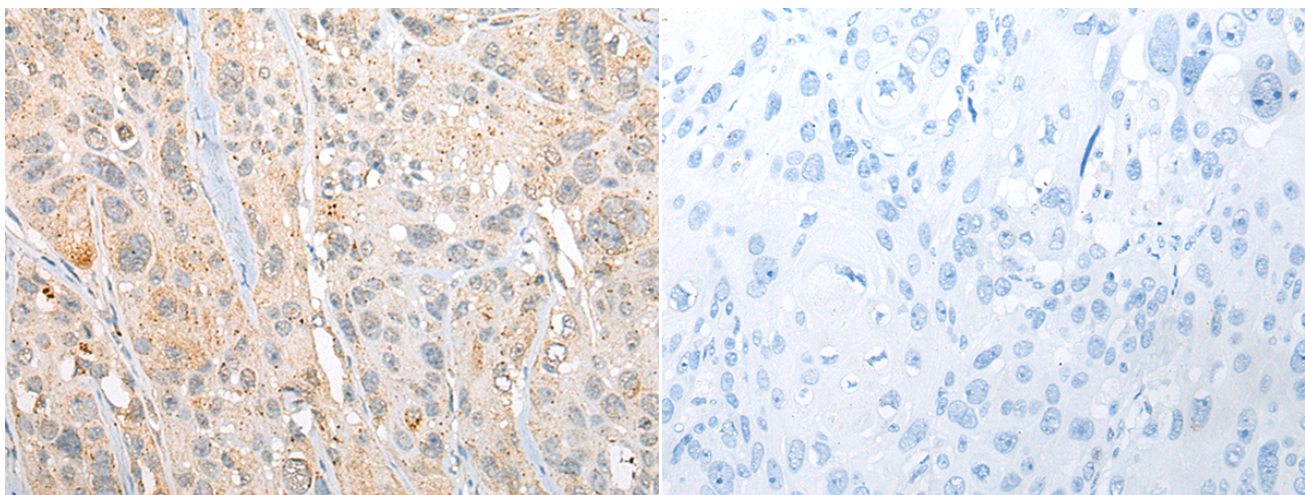
**纯化:** Antigen affinity purification

**种属反应性:** Human

**成分:** PBS (without Mg<sup>2+</sup> and Ca<sup>2+</sup>), pH 7.4, 150 mM NaCl, 0.05% Sodium Azide and 40% glycerol

**研究领域:** Signal Transduction, Cardiovascular

**储存和运输:** Store at -20°C. Avoid repeated freezing and thawing



Immunohistochemistry analysis of paraffin embedded Human esophagus cancer tissue using 221838(REM1 Antibody) at a dilution of 1/25(Cytoplasm).

In comparison with the IHC on the left, the same paraffin-embedded Human esophagus cancer tissue is first treated with the synthetic peptide and then with 221838(Anti-REM1 Antibody) at dilution 1/25.