

REL B RABBIT PAB

货号: N225705

产品全名: Rel B 兔多抗

基因符号 RELB; Transcription factor RelB; I-Rel

UNIPROT ID: Q01201

背景: Transcription factors of the nuclear factor κ B (NF- κ B)/Rel family play a pivotal role in inflammatory and immune responses. Involved in many biological processes such as inflammation, immunity, differentiation, cell growth, tumorigenesis and apoptosis.

抗原: A synthesized peptide derived from human RelB

经过测试的应用: WB,IHC-P,ICC/IF,IP

推荐稀释比: WB: 1/500-1/1000 IHC: 1/50-1/100 IF: 1/50-1/200 IP: 1/20

种属反应性: Rabbit

克隆性: Rabbit Polyclonal

分子量: Calculated MW: 62 kDa; Observed MW: 70 kDa

亚型: IgG

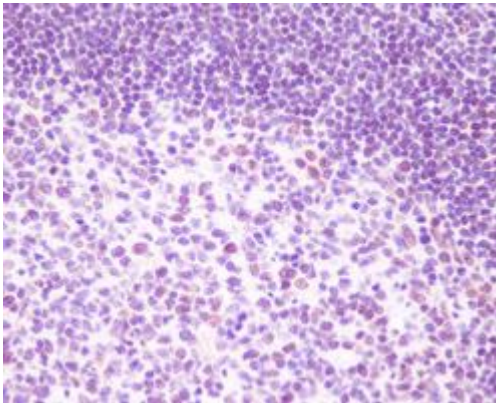
纯化: Affinity Chromatography

种属反应性: Human

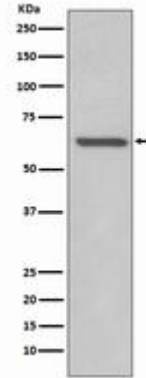
成分: PBS (without Mg²⁺ and Ca²⁺), pH 7.3 containing 50% glycerol, 0.5% BSA and 0.02% sodium azide

研究领域: Cell Biology

储存和运输: Store at -20°C. Avoid repeated freezing and thawing



Immunohistochemistry analysis of paraffin-embedded Human tonsil using RelB antibody. High-pressure and temperature Sodium Citrate pH 6.0 was used for antigen retrieval.



Western blot analysis of RelB in Raji lysates using Rel B antibody.