

## REC8 RABBIT PAB

货号: S217748

产品全名: REC8 兔多抗

基因符号 Rec8p; REC8L1; HR21spB

**UNIPROT ID:** O95072 (Gene Accession - BC010887)

**背景:** This gene encodes a member of the kleisin family of SMC (structural maintenance of chromosome) protein partners. The protein localizes to the axial elements of chromosomes during meiosis in both oocytes and spermatocytes. In the mouse, the homologous protein is a key component of the meiotic cohesion complex, which regulates sister chromatid cohesion and recombination between homologous chromosomes.

**抗原:** Fusion protein of human REC8

**经过测试的应用:** ELISA, WB, IHC

**推荐稀释比:** IHC: 25-100; WB: 200-1000; ELISA: 1000-2000

**种属反应性:** Rabbit

**克隆性:** Rabbit Polyclonal

**亚型:** Immunogen-specific rabbit IgG

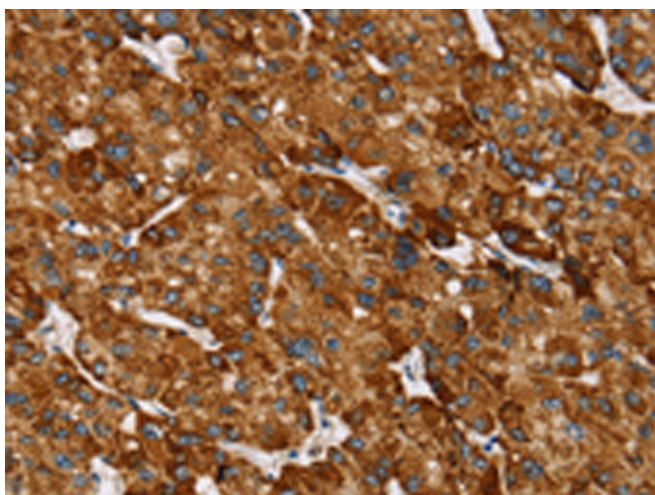
**纯化:** Antigen affinity purification

**种属反应性:** Human, Mouse

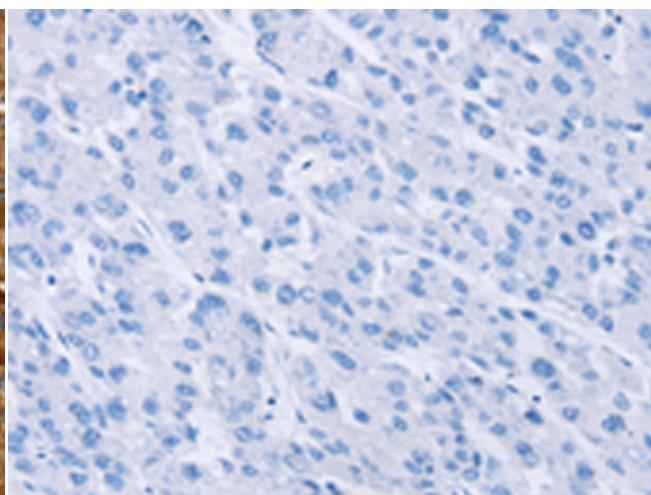
**成分:** PBS (without Mg<sup>2+</sup> and Ca<sup>2+</sup>), pH 7.4, 150 mM NaCl, 0.05% Sodium Azide and 40% glycerol

**研究领域:** Epigenetics and Nuclear Signaling, Cancer

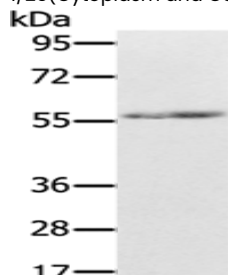
**储存和运输:** Store at -20°C. Avoid repeated freezing and thawing



Immunohistochemistry analysis of paraffin embedded Human liver cancer tissue using 217748(REC8 Antibody) at a dilution of 1/25(Cytoplasm and Cell membrane).



In comparison with the IHC on the left, the same paraffin-embedded Human liver cancer tissue is first treated with the fusion protein and then with 217748(Anti-REC8 Antibody) at dilution 1/25.



Gel: 8%SDS-PAGE, Lysate: 40 µg;

Lane: 293T cells;

Primary antibody: 217748(REC8 Antibody) at dilution 1/300;

Secondary antibody: Goat anti rabbit IgG at 1/8000 dilution;

Exposure time: 10 seconds