

## RDC1 RABBIT PAB

货号: N225687

产品全名: RDC1 兔多抗

基因符号 RDC1; CXCR7; RDC-1; CMKOR1; CXC-R7; CXCR-7; GPR159

**UNIPROT ID:** P25106

**背景:** Plays a regulatory role in CXCR4-mediated activation of cell surface integrins by CXCL12. Required for heart valve development. Acts as coreceptor with CXCR4 for a restricted number of HIV isolates.

**抗原:** A synthesized peptide derived from human CXCR7

**经过测试的应用:** WB,FC

**推荐稀释比:** WB: 1/500-1/1000 FC: 1/50-1/100

**种属反应性:** Rabbit

**克隆性:** Rabbit Polyclonal

**分子量:** Calculated MW: 41 kDa; Observed MW: 41 kDa

**亚型:** IgG

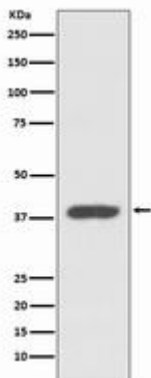
**纯化:** Affinity Chromatography

**种属反应性:** Human, Mouse and Rat

**成分:** PBS (without Mg<sup>2+</sup> and Ca<sup>2+</sup>), pH 7.3 containing 50% glycerol, 0.5% BSA and 0.02% sodium azide

**研究领域:** Signal Transduction

**储存和运输:** Store at -20°C. Avoid repeated freezing and thawing



Western blot analysis of CXCR7 in K562 lysates using RDC1 antibody.