

## RCOR1 RABBIT PAB

货号: S221763

产品全名: RCOR1 兔多抗

基因符号 RCOR; COREST

**UNIPROT ID:** Q9UKL0 (Gene Accession - NP\_055971)

**背景:** Essential component of the BHC complex, a corepressor complex that represses transcription of neuron-specific genes in non-neuronal cells. The BHC complex is recruited at RE1/NRSE sites by REST and acts by deacetylating and demethylating specific sites on histones, thereby acting as a chromatin modifier. In the BHC complex it serves as a molecular beacon for the recruitment of molecular machinery, including MeCP2 and SUV39H1, that imposes silencing across a chromosomal interval. Plays a central role in demethylation of Lys-4 of histone H3 by promoting demethylase activity of KDM1A on core histones and nucleosomal substrates. It also protects KDM1A from the proteasome. Component of a RCOR/GFI/KDM1A/HDAC complex that suppresses, via histone deacetylase (HDAC) recruitment, a number of genes implicated in multilineage blood cell development and controls hematopoietic differentiation.

**抗原:** Synthetic peptide of human RCOR1

**经过测试的应用:** ELISA, WB, IHC

**推荐稀释比:** IHC: 20-100; WB: 200-1000; ELISA: 5000-10000

**种属反应性:** Rabbit

**克隆性:** Rabbit Polyclonal

**亚型:** Immunogen-specific rabbit IgG

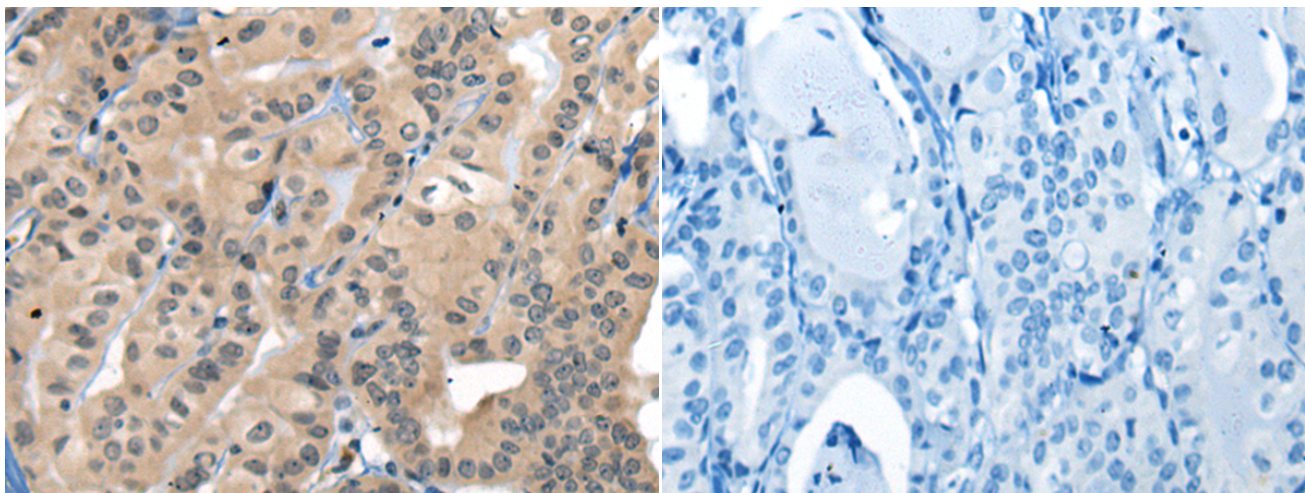
**纯化:** Antigen affinity purification

**种属反应性:** Human, Mouse

**成分:** PBS (without Mg<sup>2+</sup> and Ca<sup>2+</sup>), pH 7.4, 150 mM NaCl, 0.05% Sodium Azide and 40% glycerol

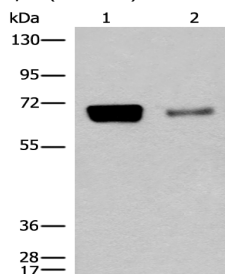
**研究领域:** Epigenetics and Nuclear Signaling

**储存和运输:** Store at -20°C. Avoid repeated freezing and thawing



Immunohistochemistry analysis of paraffin embedded Human thyroid cancer tissue using 221763(RCOR1 Antibody) at a dilution of 1/20(Nucleus).

In comparison with the IHC on the left, the same paraffin-embedded Human thyroid cancer tissue is first treated with the synthetic peptide and then with 221763(Anti-RCOR1 Antibody) at dilution 1/20.



Gel: 8%SDS-PAGE, Lysate: 40 µg;

Lane 1-2: PC-3 and 231 cell lysates;

Primary antibody: 221763(RCOR1 Antibody) at dilution 1/200;

Secondary antibody: Goat anti rabbit IgG at 1/8000 dilution;

Exposure time: 2 minutes



# Product Description

Pioneering GTPase and Oncogene Product Development since 2010

---