

RCC1 RABBIT MAB

货号: N263529

产品全名: RCC1 兔单克隆抗体

基因符号 RCC1; RCC1-I; SNHG3-RCC1; CHC1

UNIPROT ID: P18754

背景: Guanine-nucleotide releasing factor that promotes the exchange of Ran-bound GDP by GTP. Involved in the regulation of onset of chromosome condensation in the S phase. Binds both to the nucleosomes and double-stranded DNA.

抗原: A synthetic peptide of human RCC1

经过测试的应用: WB,ICC/IF,IP

推荐稀释比: WB: 1/500-1/1000 IF: 1/50-1/200 IP: 1/20

种属反应性: Rabbit

克隆性: Rabbit Monoclonal

克隆编号: R04-4A8

分子量: Calculated MW: 45 kDa; Observed MW: 45 kDa

亚型: IgG

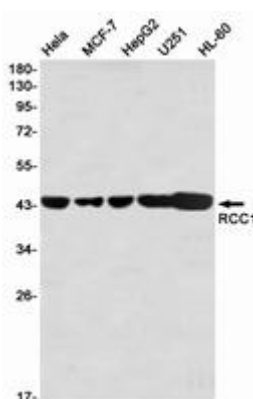
纯化: Affinity Purified

种属反应性: Human

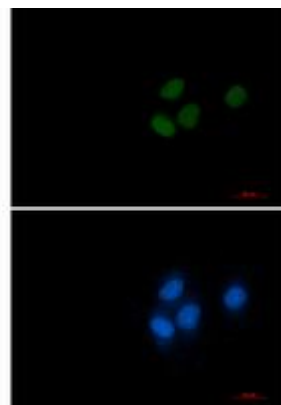
成分: PBS (without Mg²⁺ and Ca²⁺), pH 7.3 containing 50% glycerol, 0.5% BSA and 0.02% sodium azide

研究领域: -

储存和运输: Store at -20°C. Avoid repeated freezing and thawing



Western blot analysis of RCC1 in HeLa, MCF-7, HepG2, U251, HL-60 lysates using RCC1 antibody.



Immunocytochemistry analysis of RCC1 (green) in HeLa using RCC1 antibody, and DAPI (blue).



Product Description

Pioneering GTPase and Oncogene Product Development since 2010
