

## RBX1 RABBIT MAB

货号: N262841

产品全名: RBX1 兔单克隆抗体

基因符号 ROC1; RNF75; BA554C12.1

**UNIPROT ID:** P62877

背景: E3 ubiquitin ligase component of multiple cullin-RING-based E3 ubiquitin-protein ligase complexes which mediate the ubiquitination and subsequent proteasomal degradation of target proteins, including proteins involved in cell cycle progression, signal transduction, transcription and transcription-coupled nucleotide excision repair.

抗原: A synthetic peptide of human ROC1

经过测试的应用: WB,IHC-F,IHC-P,ICC/IF,IP

推荐稀释比: WB: 1/500-1/1000 IHC: 1/50-1/100 IF: 1/50-1/200 IP: 1/20

种属反应性: Rabbit

克隆性: Rabbit Monoclonal

克隆编号: R07-3F6

分子量: Calculated MW: 12 kDa; Observed MW: 12 kDa

亚型: IgG

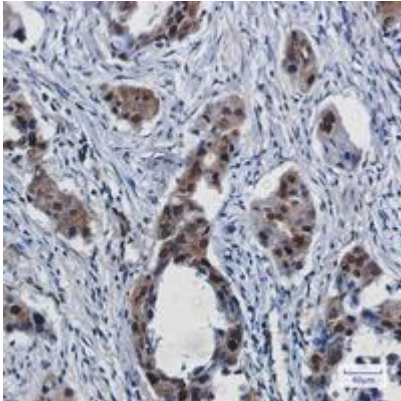
纯化: Affinity Purified

种属反应性: Human, Mouse and Rat

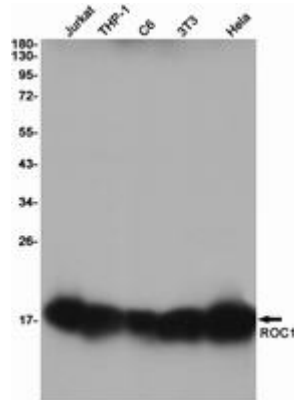
成分: PBS (without Mg<sup>2+</sup> and Ca<sup>2+</sup>), pH 7.3 containing 50% glycerol, 0.5% BSA and 0.02% sodium azide

研究领域: Cell Biology

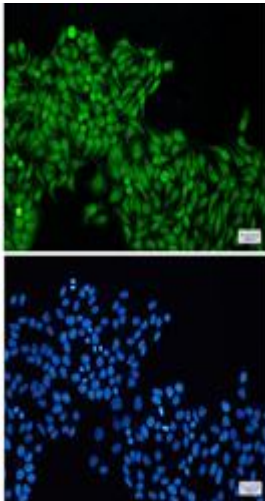
储存和运输: Store at -20°C. Avoid repeated freezing and thawing



Immunohistochemistry analysis of paraffin-embedded Human lung cancer using ROC1 antibody. High-pressure and temperature Sodium Citrate pH 6.0 was used for antigen retrieval.



Western blot analysis of ROC1 in Jurkat, THP-1, C6, 3T3, HeLa lysates using RBX1 antibody.



Immunocytochemistry analysis of ROC1 (green) in HeLa using ROC1 antibody, and DAPI (blue)