

RBMS3 RABBIT PAB

货号: S219981

产品全名: RBMS3 兔多抗

基因符号

UNIPROT ID: Q6XE24 (Gene Accession - NP_001003793)

背景: This gene encodes an RNA-binding protein that belongs to the c-myc gene single-strand binding protein family. These proteins are characterized by the presence of two sets of ribonucleoprotein consensus sequence (RNP-CS) that contain conserved motifs, RNP1 and RNP2, originally described in RNA binding proteins, and required for DNA binding. These proteins have been implicated in such diverse functions as DNA replication, gene transcription, cell cycle progression and apoptosis. The encoded protein was isolated by virtue of its binding to an upstream element of the alpha2(I) collagen promoter. The observation that this protein localizes mostly in the cytoplasm suggests that it may be involved in a cytoplasmic function such as controlling RNA metabolism, rather than transcription. Multiple alternatively spliced transcript variants encoding different isoforms have been found for this gene.

抗原: Synthetic peptide of human RBMS3

经过测试的应用: ELISA, WB, IHC

推荐稀释比: IHC: 50-100;WB: 1000-5000;ELISA: 2000-10000

种属反应性: Rabbit

克隆性: Rabbit Polyclonal

亚型: Immunogen-specific rabbit IgG

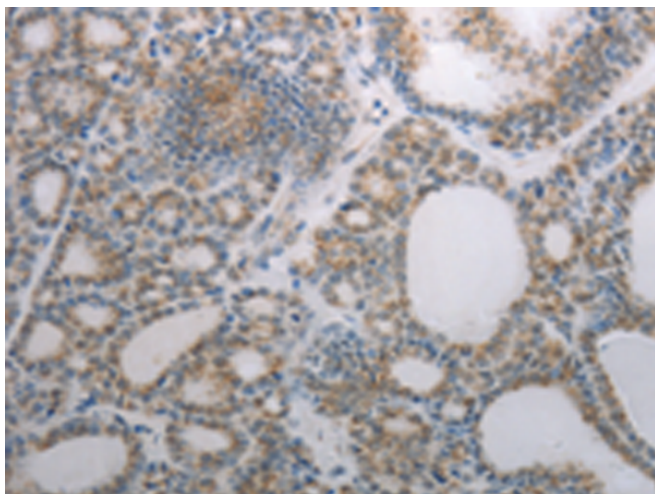
纯化: Antigen affinity purification

种属反应性: Human, Mouse

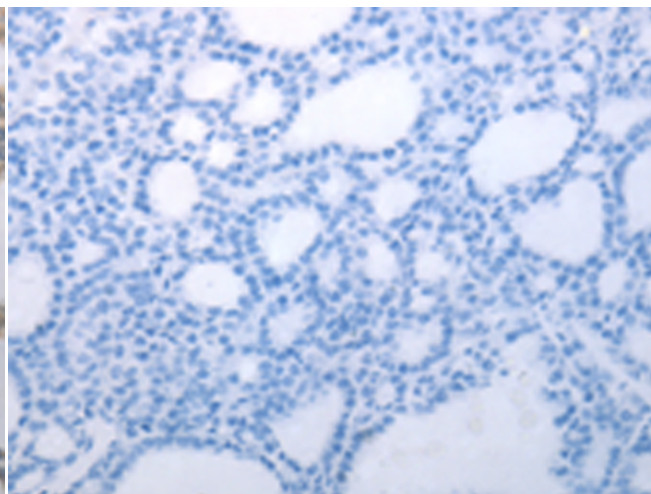
成分: PBS (without Mg²⁺ and Ca²⁺), pH 7.4, 150 mM NaCl, 0.05% Sodium Azide and 40% glycerol

研究领域: Epigenetics and Nuclear Signaling

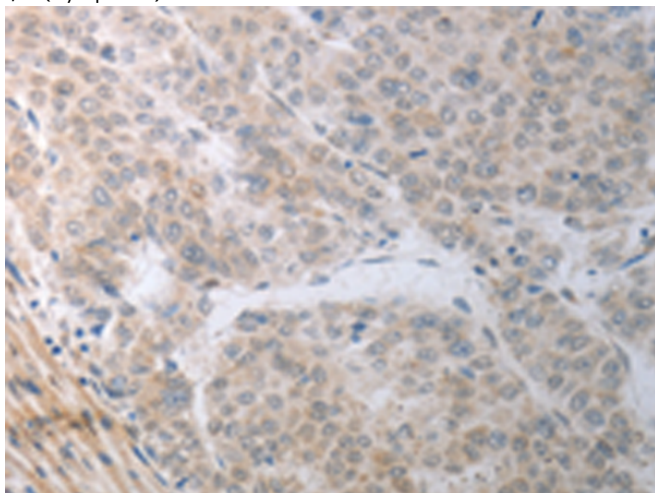
储存和运输: Store at -20°C. Avoid repeated freezing and thawing



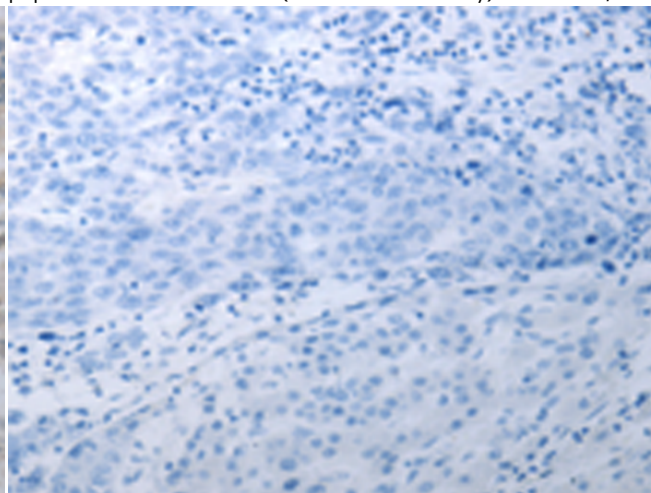
Immunohistochemistry analysis of paraffin embedded Human thyroid cancer tissue using 219981(RBMS3 Antibody) at a dilution of 1/70(Cytoplasm).



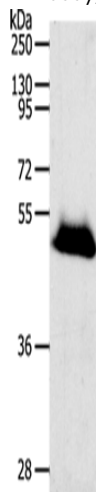
In comparison with the IHC on the left, the same paraffin-embedded Human thyroid cancer tissue is first treated with the synthetic peptide and then with 219981(Anti-RBMS3 Antibody) at dilution 1/70.



The image on the left is immunohistochemistry of paraffin-embedded Human liver cancer tissue using 219981(Anti-RBMS3 Antibody) at a dilution of 1/70.



In comparison with the IHC on the left, the same paraffin-embedded Human liver cancer tissue is first treated with synthetic peptide and then with D260728(Anti-RBMS3 Antibody) at dilution 1/70.



Gel: 10%SDS-PAGE, Lysate: 40 μ g;
Lane: Human liver cancer tissue;
Primary antibody: 219981(RBMS3 Antibody) at dilution 1/1000;
Secondary antibody: Goat anti rabbit IgG at 1/8000 dilution;
Exposure time: 20 seconds



Product Description

Pioneering GTPase and Oncogene Product Development since 2010
