

RBMS1 RABBIT PAB

货号: S216087

产品全名: RBMS1 兔多抗

基因符号 YC1; MSSP; SCR2; HCC-4; MSSP-1; MSSP-2; MSSP-3; C2orf12

UNIPROT ID: P29558 (Gene Accession - NP_002888)

背景: This gene encodes a member of a small family of proteins which bind single stranded DNA/RNA. These proteins are characterized by the presence of two sets of ribonucleoprotein consensus sequence (RNP-CS) that contain conserved motifs, RNP1 and RNP2, originally described in RNA binding proteins, and required for DNA binding. These proteins have been implicated in such diverse functions as DNA replication, gene transcription, cell cycle progression and apoptosis. Several transcript variants, resulting from alternative splicing and encoding different isoforms, have been described. A pseudogene for this locus is found on chromosome 12.

抗原: Synthetic peptide of human RBMS1

经过测试的应用: ELISA, IHC

推荐稀释比: IHC: 50-100; ELISA: 5000-10000

种属反应性: Rabbit

克隆性: Rabbit Polyclonal

亚型: Immunogen-specific rabbit IgG

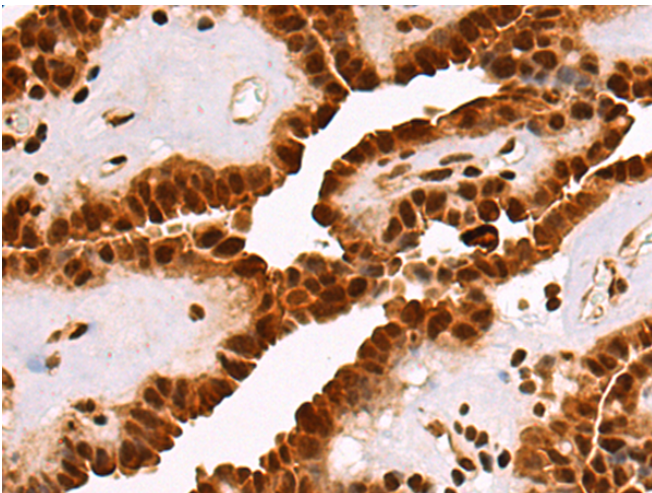
纯化: Antigen affinity purification

种属反应性: Human, Mouse, Rat

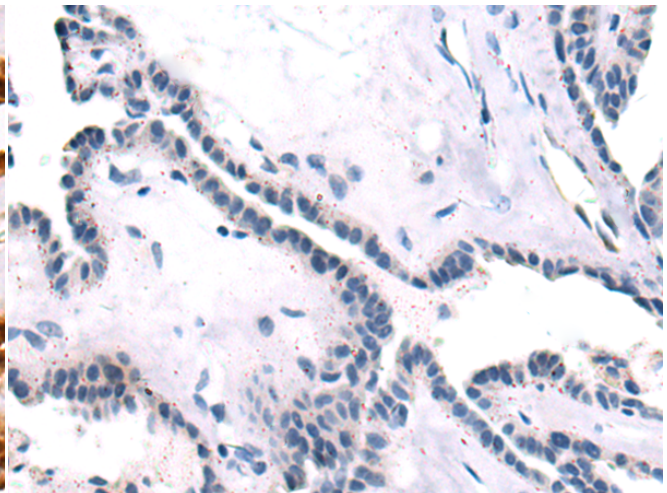
成分: PBS (without Mg²⁺ and Ca²⁺), pH 7.4, 150 mM NaCl, 0.05% Sodium Azide and 40% glycerol

研究领域: Epigenetics and Nuclear Signaling

储存和运输: Store at -20°C. Avoid repeated freezing and thawing



Immunohistochemistry analysis of paraffin embedded Human thyroid cancer tissue using 216087(RBMS1 Antibody) at a dilution of 1/35(Nucleus).



In comparison with the IHC on the left, the same paraffin-embedded Human thyroid cancer tissue is first treated with the synthetic peptide and then with 216087(Anti-RBMS1 Antibody) at dilution 1/35.