

RBM26 RABBIT PAB

货号: S222164

产品全名: RBM26 兔多抗

基因符号: ARRS2; SE70-2; ZC3H17; PRO1777; C13orf10; PPP1R132

UNIPROT ID: Q5T8P6 (Gene Accession - NP_001273560)

背景: RBM26 (RNA binding motif protein 26) bears two RNA recognition motif (RRM) domains and a C3H1-type zinc finger. The function of RBM26 has not been characterized.

抗原: Synthetic peptide of human RBM26

经过测试的应用: ELISA, IHC

推荐稀释比: IHC: 30-150; ELISA: 5000-10000

种属反应性: Rabbit

克隆性: Rabbit Polyclonal

亚型: Immunogen-specific rabbit IgG

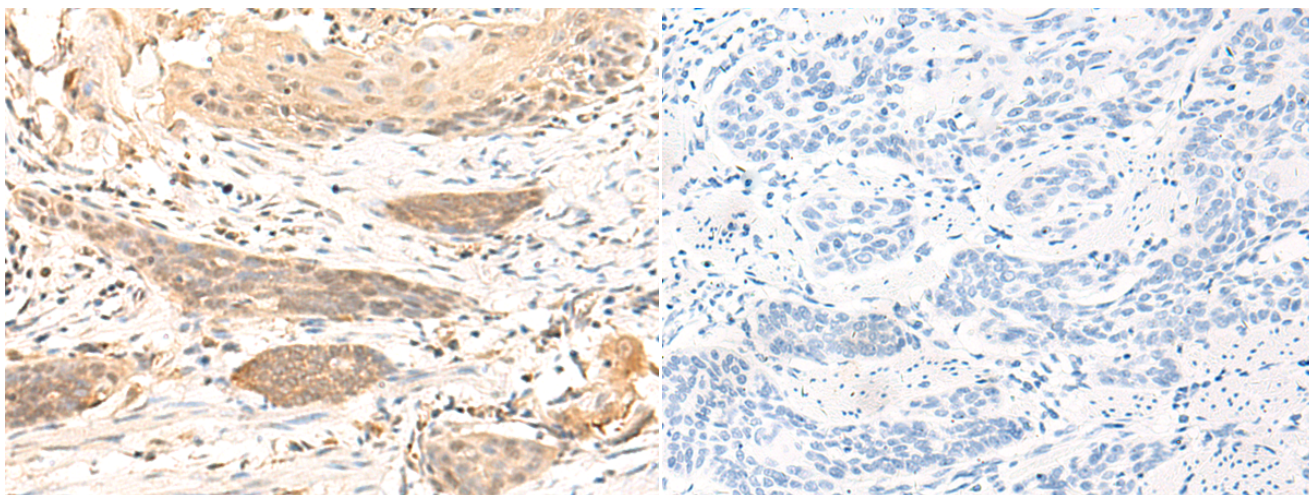
纯化: Antigen affinity purification

种属反应性: Human, Mouse

成分: PBS (without Mg²⁺ and Ca²⁺), pH 7.4, 150 mM NaCl, 0.05% Sodium Azide and 40% glycerol

研究领域: Epigenetics and Nuclear Signaling, Cell Biology

储存和运输: Store at -20°C. Avoid repeated freezing and thawing



Immunohistochemistry analysis of paraffin embedded Human esophagus cancer tissue using 222164(RBM26 Antibody) at a dilution of 1/35(Nucleus).

In comparison with the IHC on the left, the same paraffin-embedded Human esophagus cancer tissue is first treated with the synthetic peptide and then with 222164(Anti-RBM26 Antibody) at dilution 1/35.