

RB RABBIT PAB

货号: N225682

产品全名: Rb 兔多抗

基因符号 RB1; Retinoblastoma-associated protein; p105-Rb; pRb; Rb; pp110

UNIPROT ID: P06400

背景: Cell cycle-dependent phosphorylation by a CDK inhibits Rb target binding and allows cell cycle progression. Rb inactivation and subsequent cell cycle progression likely requires an initial phosphorylation by cyclin D-CDK4/6 followed by cyclin E-CDK2 phosphorylation. Specificity of different CDK/cyclin complexes has been observed in vitro and cyclin D1 is required for Ser780 phosphorylation in vivo.

抗原: A synthesized peptide derived from human Retinoblastoma

经过测试的应用: WB,IHC-P,ICC/IF,IP

推荐稀释比: WB: 1/500-1/1000 IHC: 1/50-1/100 IF: 1/50-1/200 IP: 1/20

种属反应性: Rabbit

克隆性: Rabbit Polyclonal

分子量: Calculated MW: 106 kDa; Observed MW: 106 kDa

亚型: IgG

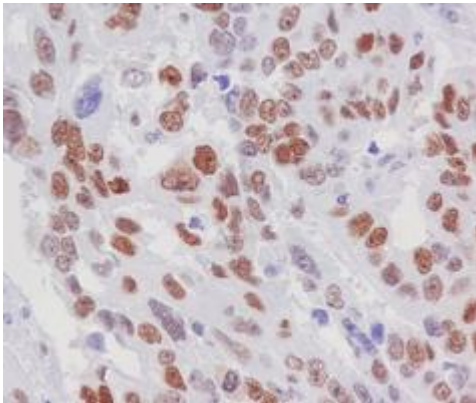
纯化: Affinity Chromatography

种属反应性: Human,Mouse

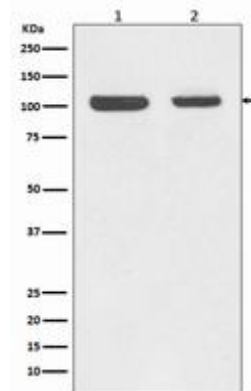
成分: PBS (without Mg²⁺ and Ca²⁺), pH 7.3 containing 50% glycerol, 0.5% BSA and 0.02% sodium azide

研究领域: Cell Biology

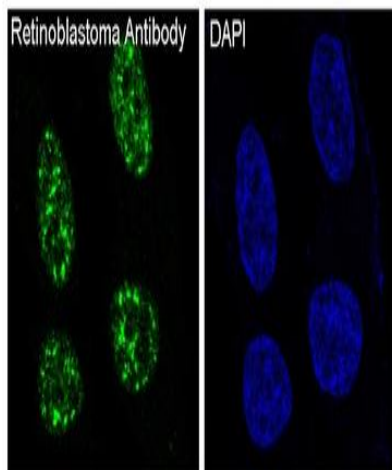
储存和运输: Store at -20°C. Avoid repeated freezing and thawing



Immunohistochemistry analysis of paraffin-embedded Human lung cancer using Retinoblastoma antibody. High-pressure and temperature Sodium Citrate pH 6.0 was used for antigen retrieval.



Western blot analysis of Retinoblastoma in (1) Jurkat lysates; (2) MCF-7 lysates using Rb antibody.



Immunofluorescence analysis of Rb in SH-SY5Y using Retinoblastoma antibody.