

RASSF8 RABBIT PAB

货号: N225165

产品全名: RASSF8 兔多抗

基因符号 RASSF8; C12orf2; Ras association domain-containing protein 8; Carcinoma-associated protein HOJ-1

UNIPROT ID: Q8NHQ8

背景: This gene encodes a member of the Ras-association domain family (RASSF) of tumor suppressor proteins. This gene is essential for maintaining adherens junction function in epithelial cells and has a role in epithelial cell migration. It is a lung tumor suppressor gene candidate.

抗原: Synthesized peptide derived from RASSF8 . at AA range: 60-140

经过测试的应用: WB,ELISA

推荐稀释比: WB: 1/500-1/1000 ELISA: 1/10000

种属反应性: Rabbit

克隆性: Rabbit Polyclonal

分子量: Calculated MW: 48 kDa; Observed MW: 48 kDa

亚型: IgG

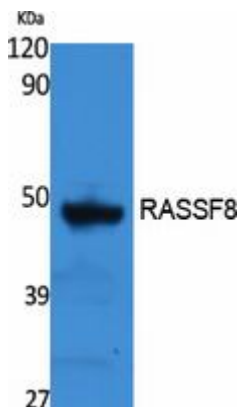
纯化: Affinity Purified

种属反应性: Human,Rat

成分: PBS (without Mg²⁺ and Ca²⁺), pH 7.3 containing 50% glycerol, 0.5% BSA and 0.02% sodium azide

研究领域: Signal Transduction

储存和运输: Store at -20°C. Avoid repeated freezing and thawing



Western blot analysis of RASSF8 in rat stomach lysates using RASSF8 antibody.



Product Description

Pioneering GTPase and Oncogene Product Development since 2010
