

RASSF7 RABBIT PAB

货号: S211478

产品全名: RASSF7 兔多抗

基因符号: HRC1; HRAS1; C11orf13

UNIPROT ID: Q02833 (Gene Accession - BC106921)

背景: RASSF7 (Ras association domain-containing protein 7), also designated HRAS1-related cluster protein 1, is a 373 amino acid protein that localizes to the centrosome. RASSF7, RASSF8, RASSF9 and RASSF10 are four evolutionary conserved proteins that are collectively known as the N-terminal RASSF family. Expressed in skin, neural tube and eye, RASSF7 is believed to play an essential role in mitosis. Further supporting its mitotic role, knockdown of *Xenopus* RASSF7 has been shown to influence cell failure to form mitotic spindle and also cause nuclear breakdown and apoptosis.

抗原: Fusion protein of human RASSF7

经过测试的应用: ELISA, WB, IHC

推荐稀释比: IHC: 25-100;WB: 500-2000;ELISA: 2000-5000

种属反应性: Rabbit

克隆性: Rabbit Polyclonal

亚型: Immunogen-specific rabbit IgG

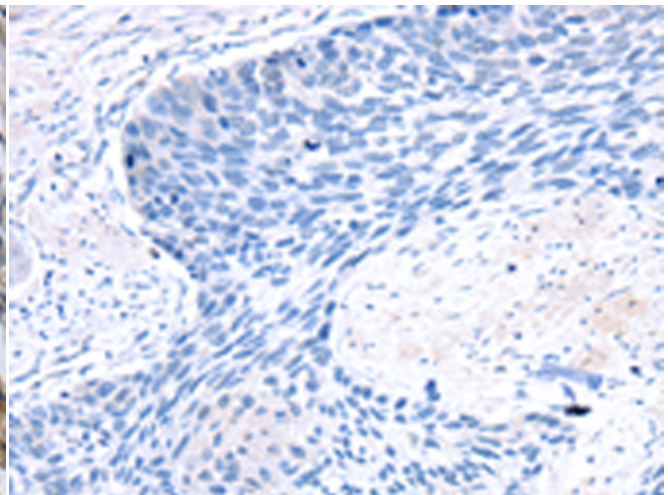
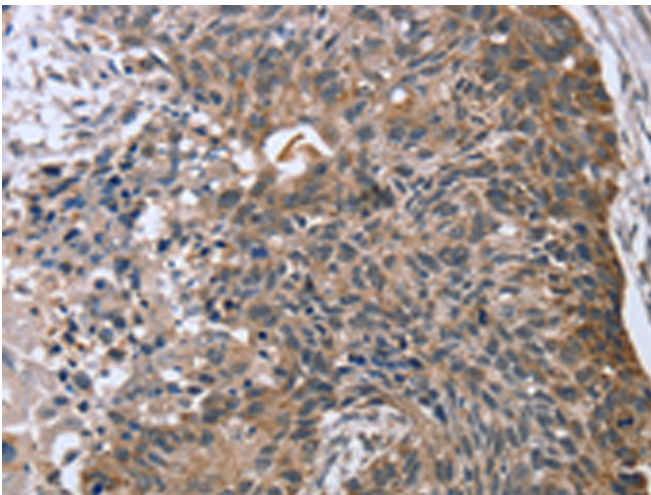
纯化: Antigen affinity purification

种属反应性: Human

成分: PBS (without Mg²⁺ and Ca²⁺), pH 7.4, 150 mM NaCl, 0.05% Sodium Azide and 40% glycerol

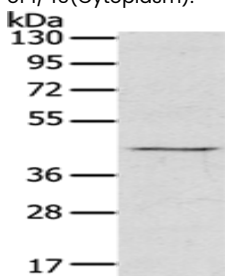
研究领域: Epigenetics and Nuclear Signaling, Cancer

储存和运输: Store at -20°C. Avoid repeated freezing and thawing



Immunohistochemistry analysis of paraffin embedded Human esophagus cancer tissue using 211478 (RASSF7 Antibody) at a dilution of 1/45 (Cytoplasm).

In comparison with the IHC on the left, the same paraffin-embedded Human esophagus cancer tissue is first treated with the fusion protein and then with 211478 (Anti-RASSF7 Antibody) at dilution 1/45.



Gel: 8%SDS-PAGE, Lysate: 60 µg;

Lane: Raji cells;

Primary antibody: 211478 (RASSF7 Antibody) at dilution 1/800;

Secondary antibody: Goat anti rabbit IgG at 1/8000 dilution;

Exposure time: 5 seconds