

RASD2 RABBIT PAB

货号: S217888

产品全名: RASD2 兔多抗

基因符号: Rhes; TEM2; MGC:4834

UNIPROT ID: Q96D21 (Gene Accession - BC013419)

背景: This gene encodes a Ras-related protein that enriched in striatum. The product of this gene binds to GTP and possesses intrinsic GTPase activity. The gene belongs to the Ras superfamily of small GTPases. The exact function of this gene is unknown, but most striatum-specific mRNAs characterized to date encode components of signal transduction cascades.

抗原: Full length fusion 蛋白

经过测试的应用: ELISA, WB, IHC

推荐稀释比: IHC: 25-100;WB: 200-1000;ELISA: 1000-2000

种属反应性: Rabbit

克隆性: Rabbit Polyclonal

亚型: Immunogen-specific rabbit IgG

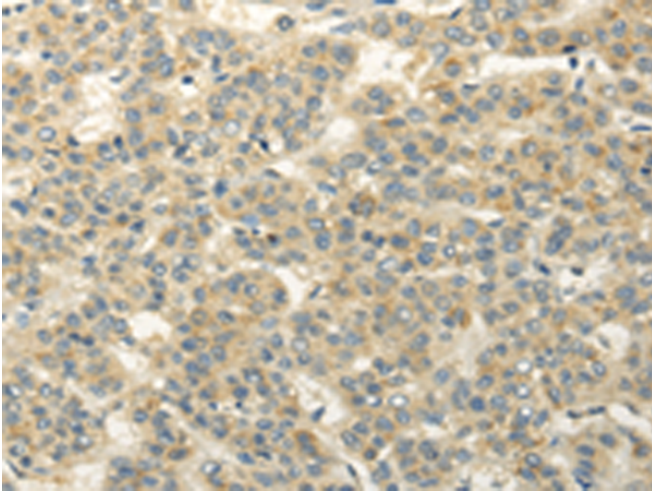
纯化: Antigen affinity purification

种属反应性: Human, Mouse

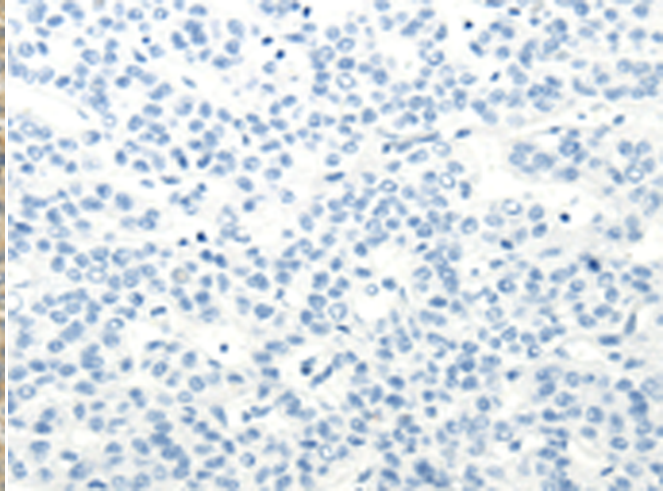
成分: PBS (without Mg²⁺ and Ca²⁺), pH 7.4, 150 mM NaCl, 0.05% Sodium Azide and 40% glycerol

研究领域: Signal Transduction, Cancer, Immunology

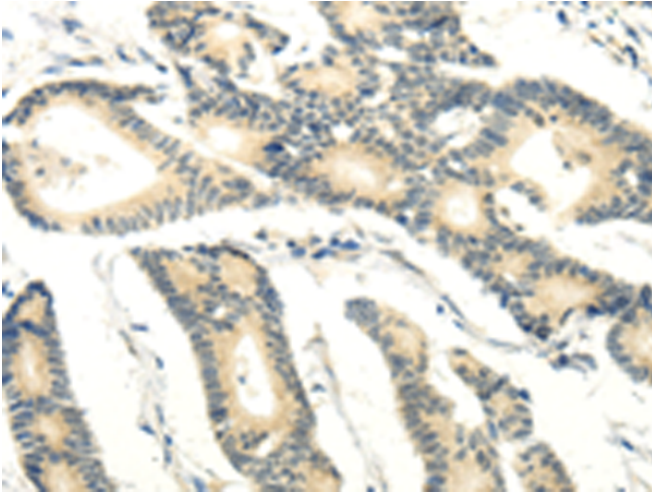
储存和运输: Store at -20°C. Avoid repeated freezing and thawing



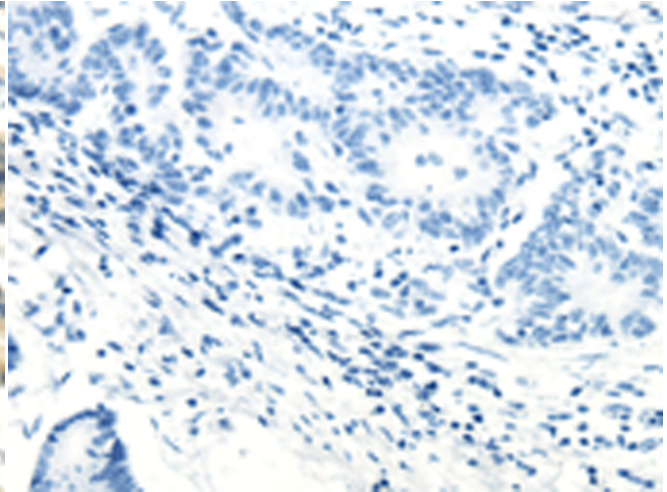
Immunohistochemistry analysis of paraffin embedded Human liver cancer tissue using 217888(RASD2 Antibody) at a dilution of 1/20 (Cell membrane).



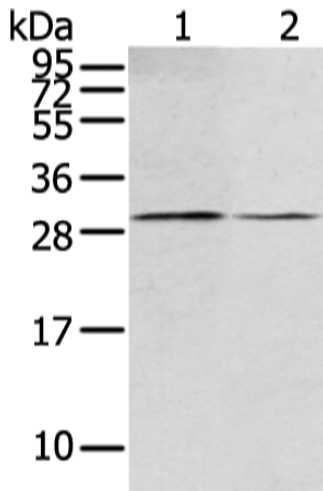
In comparison with the IHC on the left, the same paraffin-embedded Human liver cancer tissue is first treated with the fusion protein and then with 217888(Anti-RASD2 Antibody) at dilution 1/20.



The image on the left is immunohistochemistry of paraffin-embedded Human colorectal cancer tissue using 217888(Anti-RASD2 Antibody) at a dilution of 1/20.



In comparison with the IHC on the left, the same paraffin-embedded Human colorectal cancer tissue is first treated with fusion protein and then with D223304(Anti-RASD2 Antibody) at dilution 1/20.



Gel: 12%SDS-PAGE, Lysate: 40 µg;
Lane 1-2: Mouse kidney tissue and HeLa cell;
Primary antibody: 217888(RASD2 Antibody) at dilution 1/400;
Secondary antibody: Goat anti rabbit IgG at 1/8000 dilution;
Exposure time: 10 seconds



Product Description

Pioneering GTPase and Oncogene Product Development since 2010
