

## RARRES1 RABBIT PAB

货号: S220236

产品全名: RARRES1 兔多抗

基因符号 TIG1

**UNIPROT ID:** P49788 (Gene Accession - NP\_002879)

**背景:** This gene was identified as a retinoic acid (RA) receptor-responsive gene. It encodes a type I membrane protein. The expression of this gene is upregulated by tazarotene as well as by retinoic acid receptors. The expression of this gene is found to be downregulated in prostate cancer, which is caused by the methylation of its promoter and CpG island. Alternatively spliced transcript variant encoding distinct isoforms have been observed.

**抗原:** Synthetic peptide of human RARRES1

**经过测试的应用:** ELISA, IHC

**推荐稀释比:** IHC: 100-300; ELISA: 5000-20000

**种属反应性:** Rabbit

**克隆性:** Rabbit Polyclonal

**亚型:** Immunogen-specific rabbit IgG

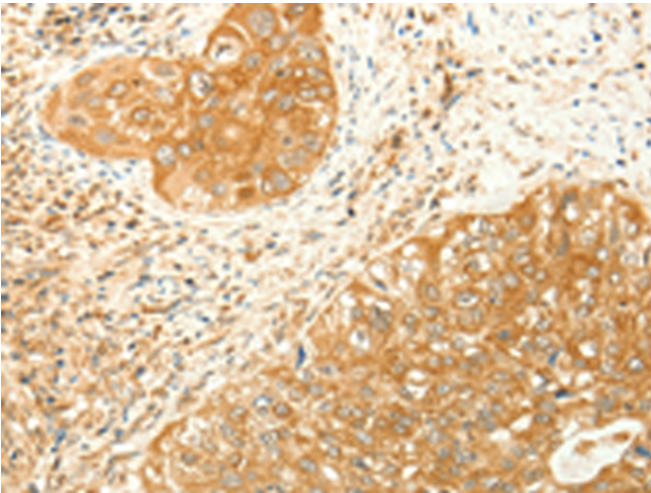
**纯化:** Antigen affinity purification

**种属反应性:** Human

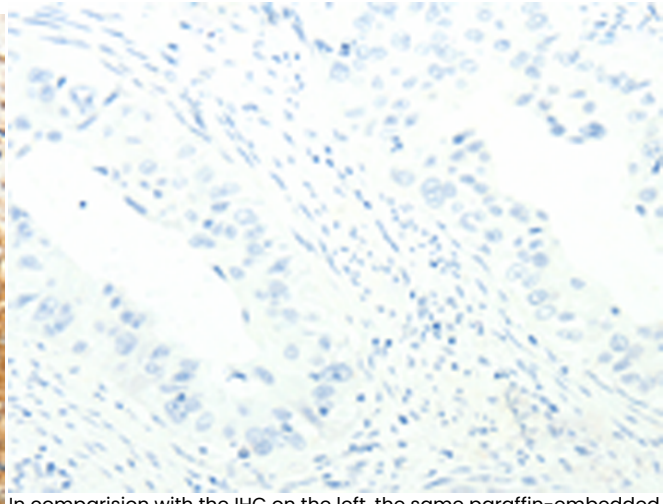
**成分:** PBS (without Mg<sup>2+</sup> and Ca<sup>2+</sup>), pH 7.4, 150 mM NaCl, 0.05% Sodium Azide and 40% glycerol

**研究领域:** Epigenetics and Nuclear Signaling, Cancer

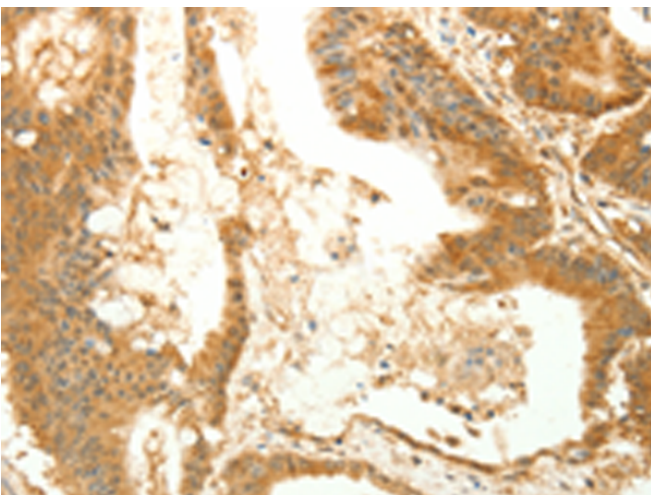
**储存和运输:** Store at -20°C. Avoid repeated freezing and thawing



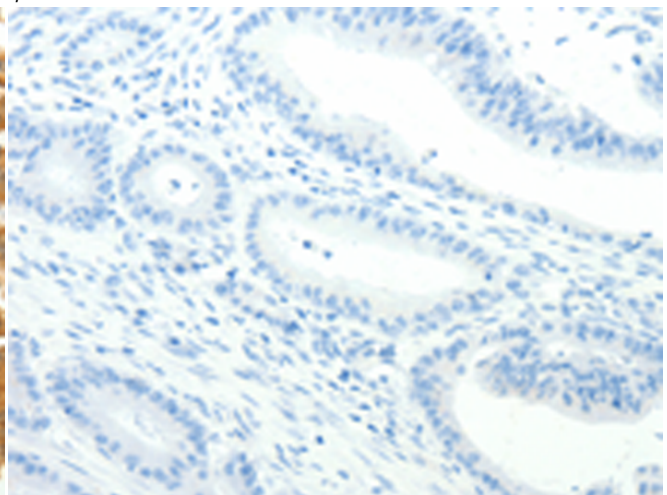
Immunohistochemistry analysis of paraffin embedded Human cervical cancer tissue using 220236 (RARRES1 Antibody) at a dilution of 1/60 (Cytoplasm).



In comparison with the IHC on the left, the same paraffin-embedded Human cervical cancer tissue is first treated with the synthetic peptide and then with 220236 (Anti-RARRES1 Antibody) at dilution 1/60.



The image on the left is immunohistochemistry of paraffin-embedded Human colon cancer tissue using 220236 (Anti-RARRES1 Antibody) at a dilution of 1/60.



In comparison with the IHC on the left, the same paraffin-embedded Human colon cancer tissue is first treated with synthetic peptide and then with D261179 (Anti-RARRES1 Antibody) at dilution 1/60.



# Product Description

Pioneering GTPase and Oncogene Product Development since 2010

---