

## RAP80 RABBIT MAB

货号: N263525

产品全名: RAP80 兔单克隆抗体

基因符号 RAP80; X2HRIP110

**UNIPROT ID:** Q96RL1

**背景:** Ubiquitin-binding protein that specifically recognizes and binds 'Lys-63'-linked ubiquitin. Plays a central role in the BRCA1-A complex by specifically binding 'Lys-63'-linked ubiquitinated histones H2A and H2AX at DNA lesions sites, leading to target the BRCA1-BARD1 heterodimer to sites of DNA damage at double-strand breaks (DSBs).

**抗原:** A synthetic peptide of human RAP80

**经过测试的应用:** WB,IHC-F,IHC-P,ICC/IF

**推荐稀释比:** WB: 1/500-1/1000 IHC: 1/50-1/100 IF: 1/50-1/200

**种属反应性:** Rabbit

**克隆性:** Rabbit Monoclonal

**克隆编号:** R01-0D5

**分子量:** Calculated MW: 80 kDa; Observed MW: 80 kDa

**亚型:** IgG

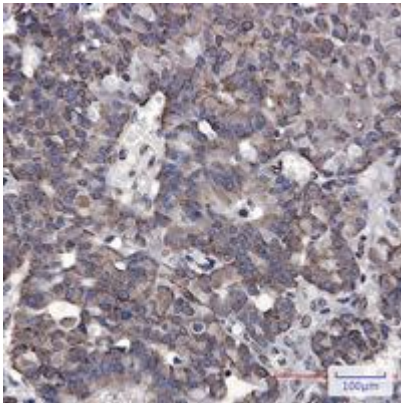
**纯化:** Affinity Purified

**种属反应性:** Human

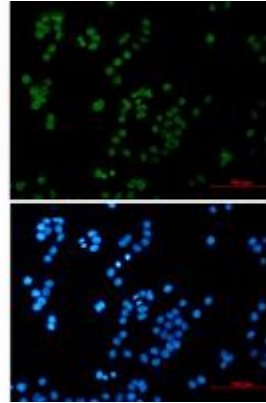
**成分:** PBS (without Mg<sup>2+</sup> and Ca<sup>2+</sup>), pH 7.3 containing 50% glycerol, 0.5% BSA and 0.02% sodium azide

**研究领域:** Epigenetics and Nuclear Signaling

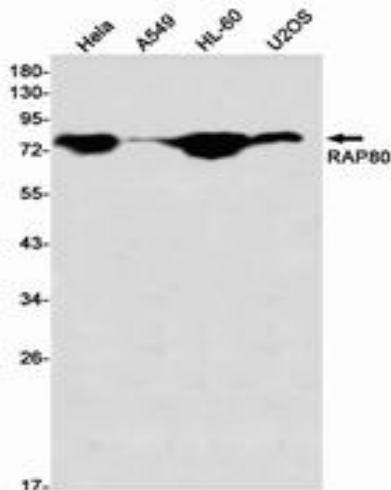
**储存和运输:** Store at -20°C. Avoid repeated freezing and thawing



Immunohistochemistry analysis of paraffin-embedded Human breast cancer tissue using RAP80 antibody. High-pressure and temperature Sodium Citrate pH 6.0 was used for antigen retrieval.



Immunocytochemistry analysis of RAP80 (green) in HeLa using RAP80 antibody, and DAPI (blue).



Western blot analysis of RAP80 in HeLa, A549, HL-60, U2OS lysates using RAP80 antibody.