

## RAP1 RABBIT MAB

货号: N262813

产品全名: RAP1 兔单克隆抗体

基因符号 Ras-related protein Rap-1b; K-REV; RAL1B

**UNIPROT ID:** P61224

**背景:** GTP-binding protein that possesses intrinsic GTPase activity. Contributes to the polarizing activity of KRIT1 and CDH5 in the establishment and maintenance of correct endothelial cell polarity and vascular lumen. Required for the localization of phosphorylated PRKCZ, PARD3 and TIAM1 to the cell junction. Plays a role in the establishment of basal endothelial barrier function.

**抗原:** A synthetic peptide of human RAP1A/B

**经过测试的应用:** WB,IP

**推荐稀释比:** WB: 1/500-1/1000 IP: 1/20

**种属反应性:** Rabbit

**克隆性:** Rabbit Monoclonal

**克隆编号:** R03-7H8

**分子量:** Calculated MW: 21 kDa; Observed MW: 21 kDa

**亚型:** IgG

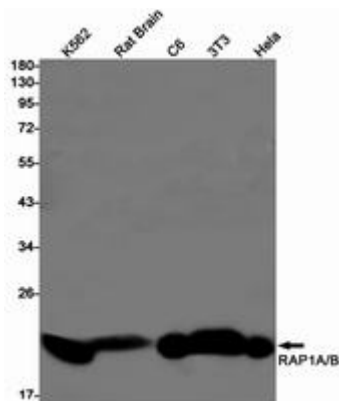
**纯化:** Affinity Purified

**种属反应性:** Human, Mouse and Rat

**成分:** PBS (without Mg<sup>2+</sup> and Ca<sup>2+</sup>), pH 7.3 containing 50% glycerol, 0.5% BSA and 0.02% sodium azide

**研究领域:** Signal Transduction

**储存和运输:** Store at -20°C. Avoid repeated freezing and thawing



Western blot analysis of RAP1A/B in K562, rat Brain, C6, 3T3, HeLa lysates using RAP1 antibody.



# Product Description

Pioneering GTPase and Oncogene Product Development since 2010

---