

RAN RABBIT MAB

货号: N262812

产品全名: Ran 兔单克隆抗体

基因符号 RAN; ARA24; OK/SW-cl.81; GTP-binding nuclear protein Ran; Androgen receptor-associated protein 24; GTPase Ran; Ras-like protein TC4; Ras-related nuclear 蛋白

UNIPROT ID: P62826

背景: GTP-binding protein involved in nucleocytoplasmic transport. Required for the import of protein into the nucleus and also for RNA export. Involved in chromatin condensation and control of cell cycle (By similarity).

抗原: A synthetic peptide of human Ran

经过测试的应用: WB,ICC/IF,IP

推荐稀释比: WB: 1/500-1/1000 IF: 1/50-1/200 IP: 1/20

种属反应性: Rabbit

克隆性: Rabbit Monoclonal

克隆编号: R01-7J8

分子量: Calculated MW: 24 kDa; Observed MW: 24 kDa

亚型: IgG

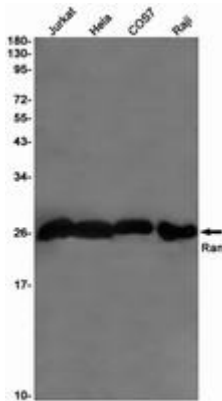
纯化: Affinity Purified

种属反应性: Human,Mouse ,Monkey

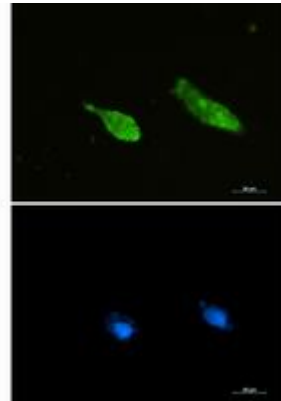
成分: PBS (without Mg²⁺ and Ca²⁺), pH 7.3 containing 50% glycerol, 0.5% BSA and 0.02% sodium azide

研究领域: Cell Biology

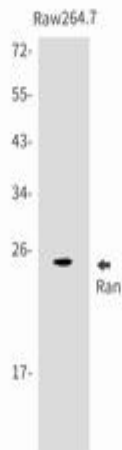
储存和运输: Store at -20°C. Avoid repeated freezing and thawing



Western blot analysis of Ran in Jurkat, HeLa, COS7, Raji lysates using Ran antibody



Immunocytochemistry analysis of Ran (green) in U87-MG using Ran antibody, and DAPI (blue).



Western blot analysis of Ran in Raw264.7 lysates using Ran antibody.