

RALB RABBIT PAB

货号: S219647

产品全名: RALB 兔多抗

基因符号

UNIPROT ID: P11234 (Gene Accession - NP_002872)

背景: This gene encodes a GTP-binding protein that belongs to the small GTPase superfamily and Ras family of proteins. GTP-binding proteins mediate the transmembrane signaling initiated by the occupancy of certain cell surface receptors.

抗原: Synthetic peptide of human RALB

经过测试的应用: ELISA, WB, IHC

推荐稀释比: IHC: Oct-50;WB: 500-2000;ELISA: 500-5000

种属反应性: Rabbit

克隆性: Rabbit Polyclonal

亚型: Immunogen-specific rabbit IgG

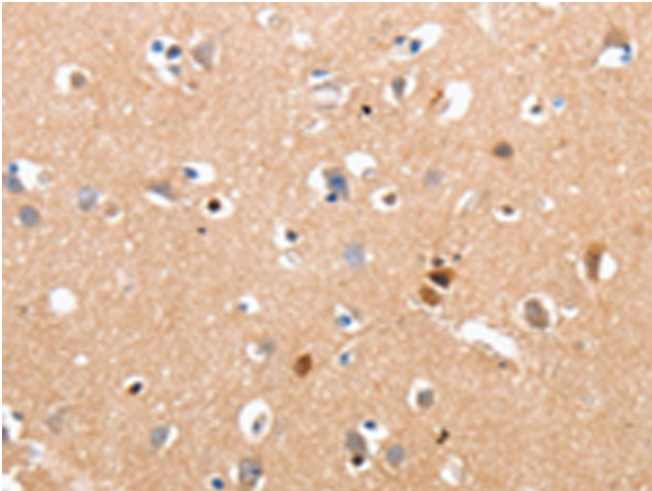
纯化: Antigen affinity purification

种属反应性: Human, Mouse, Rat

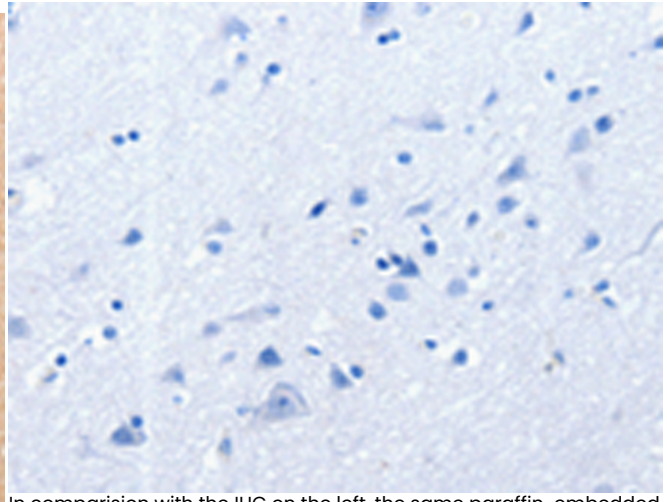
成分: PBS (without Mg²⁺ and Ca²⁺), pH 7.4, 150 mM NaCl, 0.05% Sodium Azide and 40% glycerol

研究领域: Signal Transduction

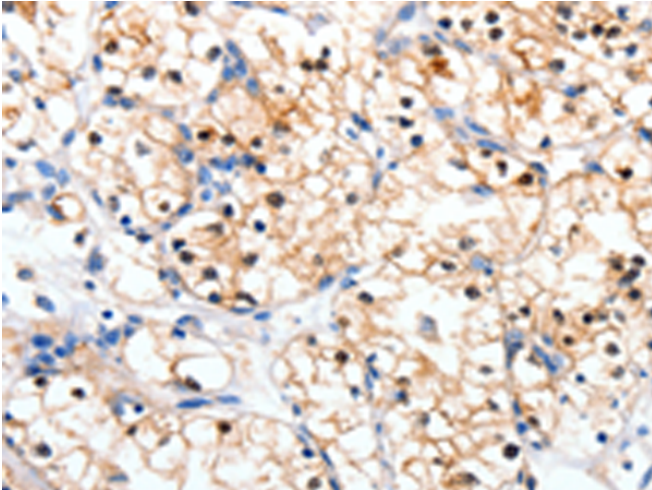
储存和运输: Store at -20°C. Avoid repeated freezing and thawing



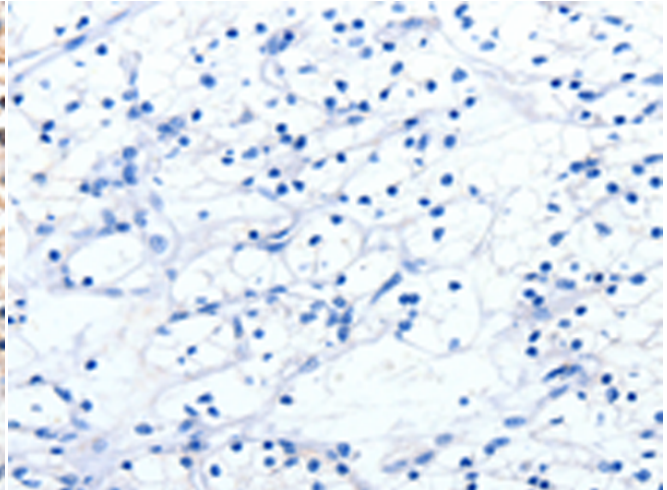
Immunohistochemistry analysis of paraffin embedded Human brain tissue using 219647(RALB Antibody) at a dilution of 1/10(Cytoplasm).



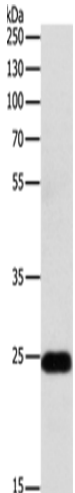
In comparison with the IHC on the left, the same paraffin-embedded Human brain tissue is first treated with the synthetic peptide and then with 219647(Anti-RALB Antibody) at dilution 1/10.



The image on the left is immunohistochemistry of paraffin-embedded Human renal cancer tissue using 219647(Anti-RALB Antibody) at a dilution of 1/10.



In comparison with the IHC on the left, the same paraffin-embedded Human renal cancer tissue is first treated with synthetic peptide and then with D260078(Anti-RALB Antibody) at dilution 1/10.



Gel: 10%SDS-PAGE, Lysate: 30 µg;
Lane: Mouse Lung tissue;
Primary antibody: 219647(RALB Antibody) at dilution 1/300;
Secondary antibody: Goat anti rabbit IgG at 1/8000 dilution;
Exposure time: 30 seconds



Product Description

Pioneering GTPase and Oncogene Product Development since 2010
