

## RAF1 RABBIT PAB

货号: N225480

产品全名: Raf1 兔多抗

基因符号 RAF1; RAF; RAF proto-oncogene serine/threonine-protein kinase; Proto-oncogene c-RAF; cRaf; Raf-1

**UNIPROT ID:** P04049

背景: Raf-1 is a MAP kinase kinase kinase (MAP3K) which functions downstream of the Ras family of membrane associated GTPases to which it binds directly. Once activated Raf-1 can phosphorylate to activate the dual specificity protein kinases MEK1 and MEK2 which in turn phosphorylate to activate the serine/threonine specific protein kinases ERK1 and ERK2.

抗原: The antiserum was produced against synthesized peptide derived from human C-RAF. AA range:251-300

经过测试的应用: ICC/IF,WB,IHC-F,IHC-P,ELISA

推荐稀释比: WB: 1/500-1/1000 IHC: 1/50-1/100 IF: 1/50-1/200 ELISA: 1/10000

种属反应性: Rabbit

克隆性: Rabbit Polyclonal

分子量: Calculated MW: 73 kDa; Observed MW: 73 kDa

亚型: IgG

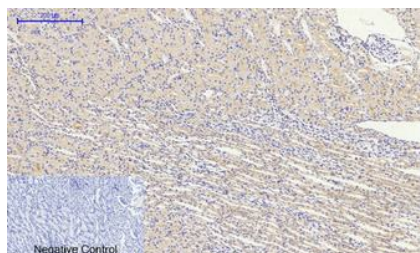
纯化: Affinity Purified

种属反应性: Human, Mouse and Rat

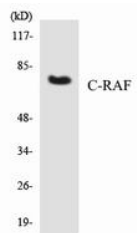
成分: PBS (without Mg<sup>2+</sup> and Ca<sup>2+</sup>), pH 7.3 containing 50% glycerol, 0.5% BSA and 0.02% sodium azide

研究领域: Signal Transduction

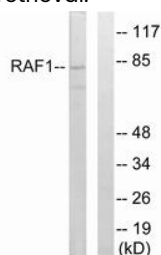
储存和运输: Store at -20°C. Avoid repeated freezing and thawing



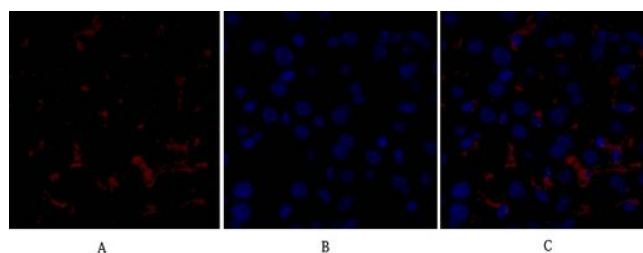
Immunohistochemistry analysis of paraffin-embedded rat kidney tissue using Raf1 antibody. High-pressure and temperature Sodium Citrate pH 6.0 was used for antigen retrieval.



Western blot analysis of Raf1 in HepG2 lysates using Raf1 antibody.



Western blot analysis of Raf1 in rat liver lysates using Raf1 antibody. The lane on the right is blocked with the synthesized peptide.



Immunofluorescence analysis of Raf1 in mouse liver using Raf1 antibody (red), and DAPI (blue).