

RAD54B RABBIT PAB

货号: S220844

产品全名: RAD54B 兔多抗

基因符号: RDH54

UNIPROT ID: Q9Y620 (Gene Accession - NP_001192192)

背景: The protein encoded by this gene belongs to the DEAD-like helicase superfamily. It shares similarity with *Saccharomyces cerevisiae* RAD54 and RDH54, both of which are involved in homologous recombination and repair of DNA. This protein binds to double-stranded DNA, and displays ATPase activity in the presence of DNA. This gene is highly expressed in testis and spleen, which suggests active roles in meiotic and mitotic recombination. Homozygous mutations of this gene were observed in primary lymphoma and colon cancer.

抗原: Synthetic peptide of human RAD54B

经过测试的应用: ELISA, IHC

推荐稀释比: IHC: 25-100; ELISA: 5000-10000

种属反应性: Rabbit

克隆性: Rabbit Polyclonal

亚型: Immunogen-specific rabbit IgG

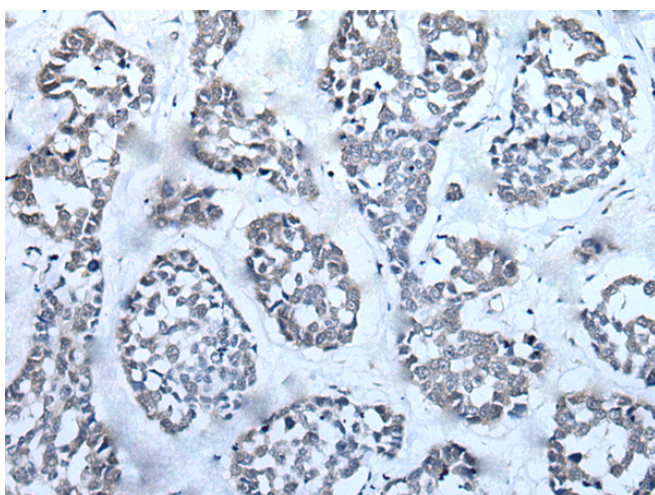
纯化: Antigen affinity purification

种属反应性: Human

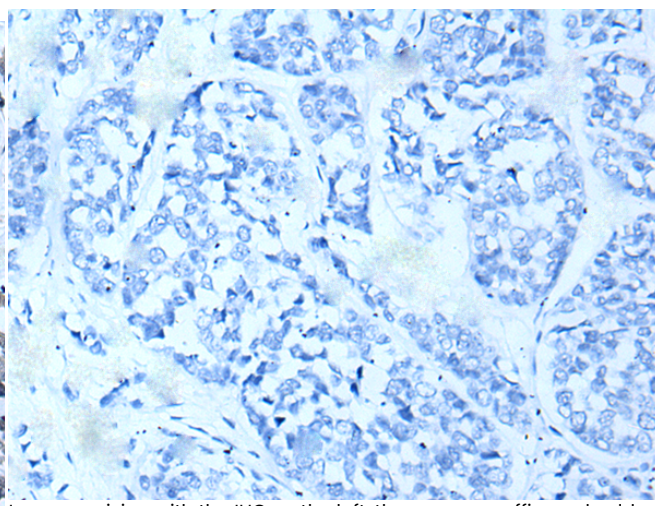
成分: PBS (without Mg²⁺ and Ca²⁺), pH 7.4, 150 mM NaCl, 0.05% Sodium Azide and 40% glycerol

研究领域: Epigenetics and Nuclear Signaling, Cancer

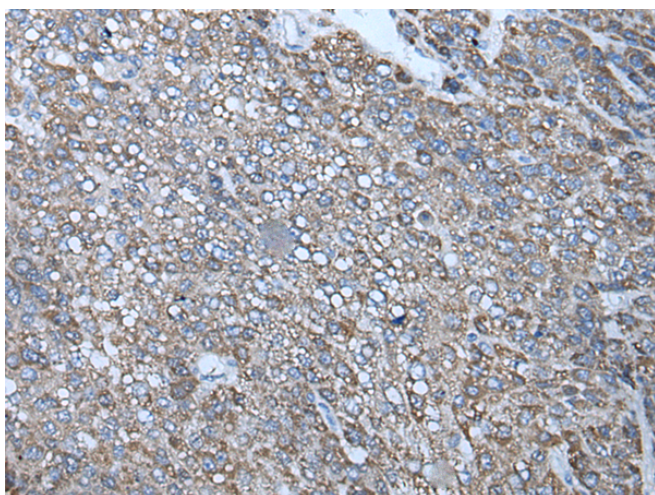
储存和运输: Store at -20°C. Avoid repeated freezing and thawing



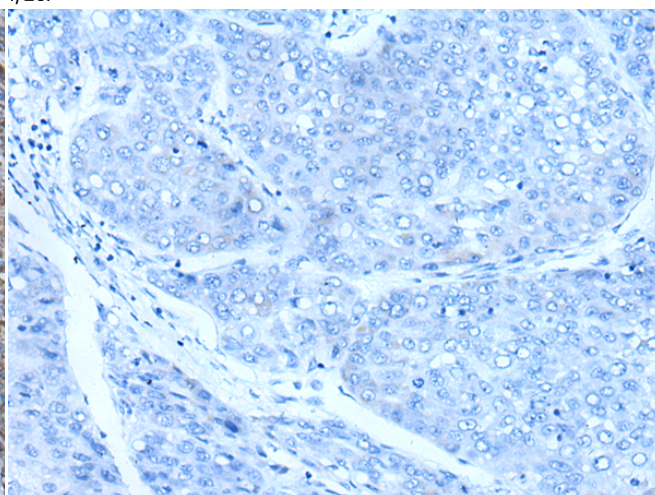
Immunohistochemistry analysis of paraffin embedded Human esophagus cancer tissue using 220844 (RAD54B Antibody) at a dilution of 1/25 (Nucleus or Cytoplasm).



In comparison with the IHC on the left, the same paraffin-embedded Human esophagus cancer tissue is first treated with the synthetic peptide and then with 220844 (Anti-RAD54B Antibody) at dilution 1/25.



The image on the left is immunohistochemistry of paraffin-embedded Human liver cancer tissue using 220844 (Anti-RAD54B Antibody) at a dilution of 1/25.



In comparison with the IHC on the left, the same paraffin-embedded Human liver cancer tissue is first treated with synthetic peptide and then with D262105 (Anti-RAD54B Antibody) at dilution 1/25.



Product Description

Pioneering GTPase and Oncogene Product Development since 2010
