

RAD21 RABBIT MAB

货号: N263520

产品全名: Rad21 兔单克隆抗体

基因符号 RAD21; HR21; KIAA0078; NXP1; Double-strand-break repair protein rad21 homolog; hHR21; Nuclear matrix protein 1; NXP-1; SCC1 homolog

UNIPROT ID: O60216

背景: Rad21 is one of the major cohesin subunits that holds sister chromatids together until anaphase, when proteolytic cleavage by separase, a caspaselike enzyme, allows chromosomal separation. Rad21 interacts with Rec8 to form a cohesin complex that functions in sister chromatid alignment. Rad21 is also involved in the repair of double-strand breaks in DNA and is essential for mitotic growth. Rad21 undergoes a C-terminal cleavage induced by diverse stimuli right before apoptosis.

抗原: A synthetic peptide of human Rad21

经过测试的应用: WB,IHC-F,IHC-P,ICC/IF

推荐稀释比: WB: 1/500-1/1000 IHC: 1/50-1/100 IF: 1/50-1/200

种属反应性: Rabbit

克隆性: Rabbit Monoclonal

克隆编号: R03-510

分子量: Calculated MW: 72 kDa; Observed MW: 130 kDa

亚型: IgG

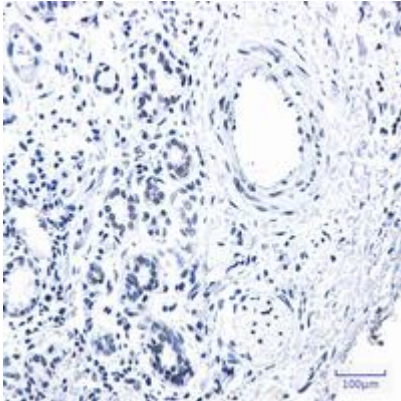
纯化: Affinity Purified

种属反应性: Human,Hamster

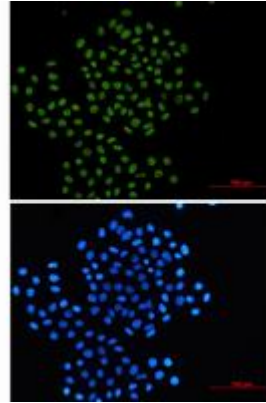
成分: PBS (without Mg²⁺ and Ca²⁺), pH 7.3 containing 50% glycerol, 0.5% BSA and 0.02% sodium azide

研究领域: Cell Biology

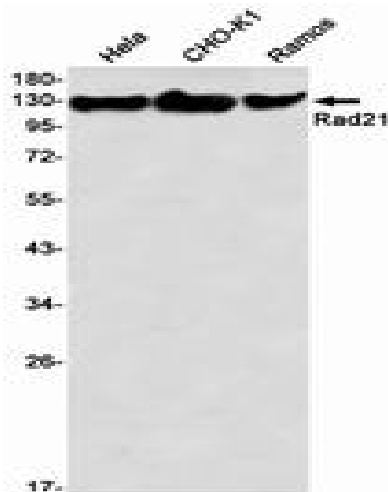
储存和运输: Store at -20°C. Avoid repeated freezing and thawing



Immunohistochemistry analysis of paraffin-embedded Human lung cancer tissue using Rad21 antibody. High-pressure and temperature Sodium Citrate pH 6.0 was used for antigen retrieval.



Immunocytochemistry analysis of Rad21 (green) in Hela using Rad21 antibody, and DAPI (blue).



Western blot analysis of Rad21 in Hela, CHO-K1, Ramos lysates using Rad21 antibody.