

RABL2B RABBIT PAB

货号: S218069

产品全名: RABL2B 兔多抗

基因符号

UNIPROT ID: Q9UNTI (Gene Accession - BC014879)

背景: The RABL2B protein is a member of the RAB gene family which belongs to the RAS GTPase superfamily. RABL2B is located within a subtelomeric region of 22q13.3. Multiple alternatively spliced transcript variants encoding several different isoforms have been found for this gene.

抗原: Fusion protein of human RABL2B

经过测试的应用: ELISA, IHC

推荐稀释比: IHC: 25-100; ELISA: 5000-10000

种属反应性: Rabbit

克隆性: Rabbit Polyclonal

亚型: Immunogen-specific rabbit IgG

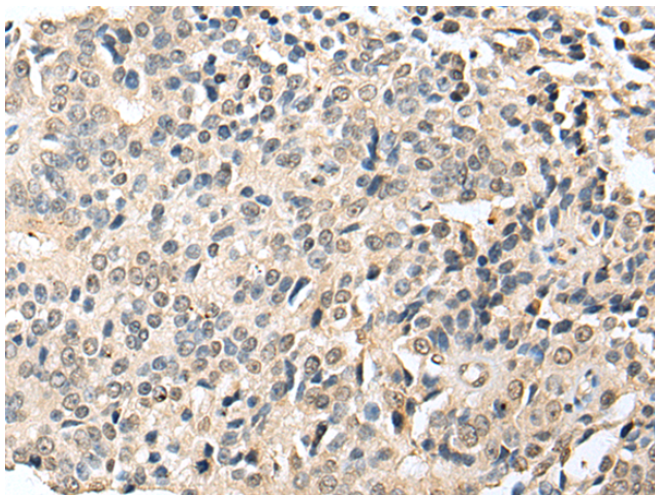
纯化: Antigen affinity purification

种属反应性: Human

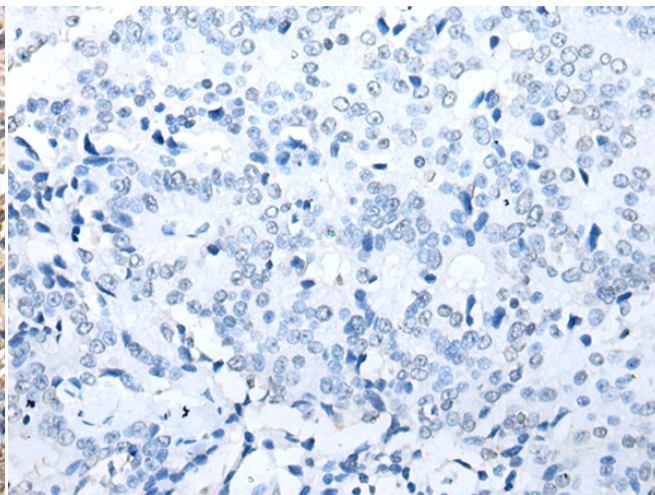
成分: PBS (without Mg²⁺ and Ca²⁺), pH 7.4, 150 mM NaCl, 0.05% Sodium Azide and 40% glycerol

研究领域: Signal Transduction

储存和运输: Store at -20°C. Avoid repeated freezing and thawing



Immunohistochemistry analysis of paraffin embedded Human prostate cancer tissue using 218069 (RABL2B Antibody) at a dilution of 1/20 (Cytoplasm and Cell membrane).



In comparison with the IHC on the left, the same paraffin-embedded Human prostate cancer tissue is first treated with the fusion protein and then with 218069 (Anti-RABL2B Antibody) at dilution 1/20.