

RABBIT IGG (5B2) MOUSE MAB

货号: N261136

产品全名: Rabbit IgG (5B2) 小鼠单抗

基因符号 Antibody; Ig gamma chain C region; Ig kappa-b4 chain C region; Ig kappa-b5 chain C region; Ig kappa-b9 chain C region; Ig lambda chain C region; K-BAS.

UNIPROT ID: -

背景: Constant region of immunoglobulin heavy chains. Immunoglobulins, also known as antibodies, are membrane-bound or secreted glycoproteins produced by B lymphocytes.

抗原: Rabbit IgG

经过测试的应用: WB,ELISA

推荐稀释比: WB: 1/500-1/1000 ELISA: 1/10000

种属反应性: Mouse

克隆性: Mouse Monoclonal

克隆编号: 5B2-F9-D6

分子量: Calculated MW: 55,25 kDa; Observed MW: 55,25 kDa

亚型: IgG1

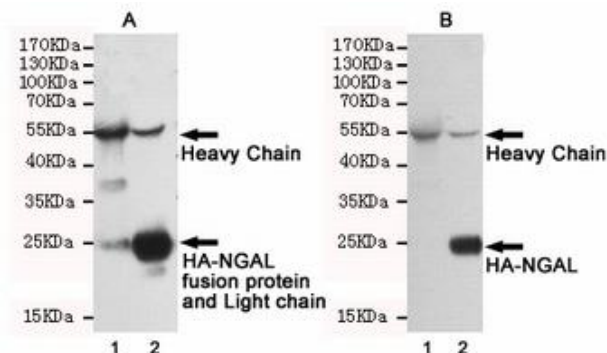
纯化: Affinity Purified

种属反应性: Rabbit

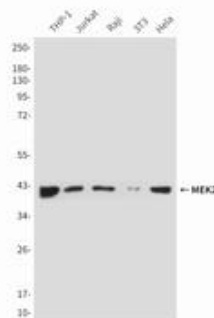
成分: PBS (without Mg²⁺ and Ca²⁺), pH 7.3 containing 50% glycerol, 0.5% BSA and 0.02% sodium azide

研究领域: Immunology

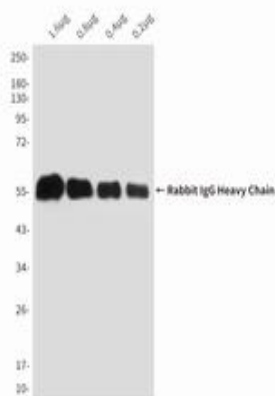
储存和运输: Store at -20°C. Avoid repeated freezing and thawing



Immunoprecipitation analysis of Rabbit IgG (5B2) in CHO-K1 lysates transfected with HA-tagged NGAL using HA-tag antibody (lane 2). Lane 1 contains rabbit IgG IP control lysates. All lanes are probed with HA-tag antibody as the primary antibody. Panel A incubated with secondary antibodies anti-rabbit whole IgG, HR-linked antibody for detecting. Panel B incubated with anti-rabbit IgG (Heavy Chain Specific) mAb and the Anti-mouse whole IgG, HR-linked antibody was used for detecting.



Western blot analysis of MEK2 in THP-1, Jurkat, Raji, 3T3 and Hela lysates using MEK2 antibody, then incubated with N261136 (Rabbit IgG mAb). Anti-mouse IgG, HR-linked antibody was used for detecting.



Western blot analysis of Rabbit IgG (5B2) in decreasing concentrations of total rabbit IgG reduced and denatured in 2X SDS loading buffer with DTT using IgG (Heavy Chain Specific) antibody.