

RAB6C RABBIT PAB

货号: S214609

产品全名: RAB6C 兔多抗

基因符号: WTH3

UNIPROT ID: Q9H0N0 (Gene Accession - NP_115520)

背景: Ras-related protein Rab-6C is a protein that in humans is encoded by the RAB6C gene. May be involved in the regulation of centrosome duplication and cell cycle progression. Highest levels are found in fetal and adult brain, prostate, testis and spinal cord.

抗原: Synthetic peptide of human RAB6C

经过测试的应用: ELISA, IHC

推荐稀释比: IHC: 50-200; ELISA: 2000-5000

种属反应性: Rabbit

克隆性: Rabbit Polyclonal

亚型: Immunogen-specific rabbit IgG

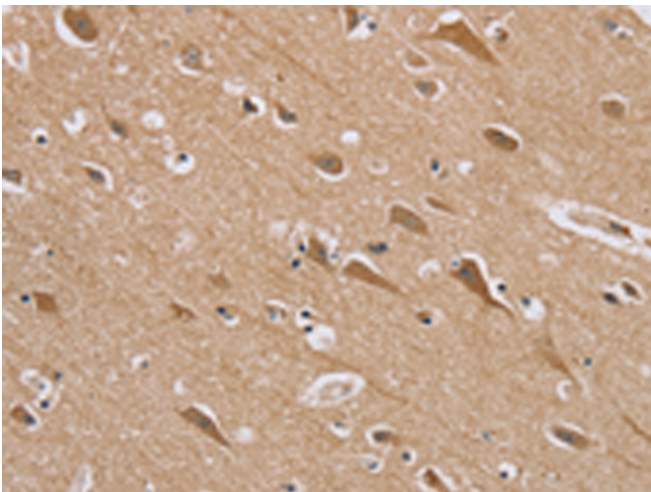
纯化: Antigen affinity purification

种属反应性: Human

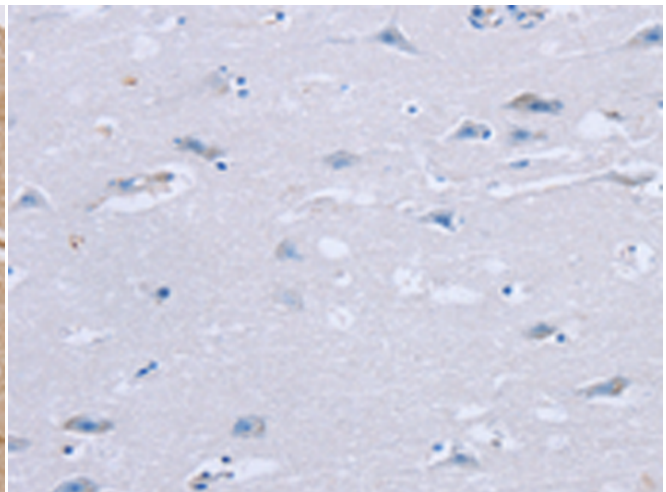
成分: PBS (without Mg²⁺ and Ca²⁺), pH 7.4, 150 mM NaCl, 0.05% Sodium Azide and 40% glycerol

研究领域: Signal Transduction, Cancer

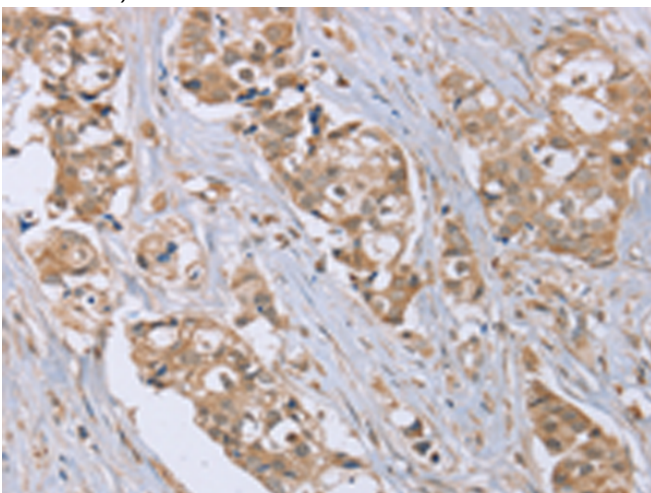
储存和运输: Store at -20°C. Avoid repeated freezing and thawing



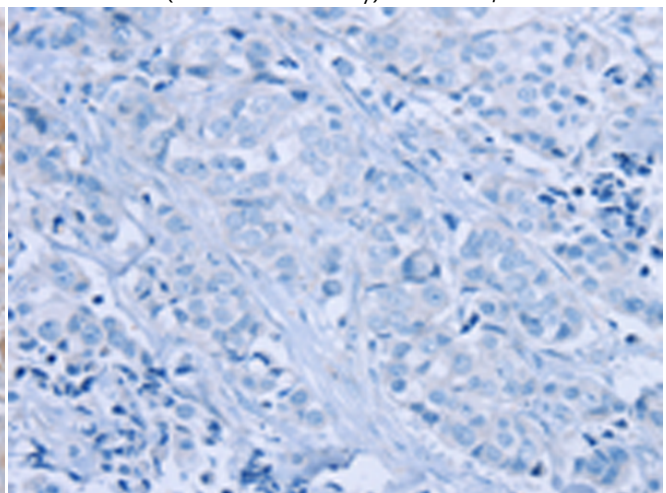
Immunohistochemistry analysis of paraffin embedded Human brain tissue using 214609(RAB6C Antibody) at a dilution of 1/45(Cytoplasm and Nucleus).



In comparison with the IHC on the left, the same paraffin-embedded Human brain tissue is first treated with the synthetic peptide and then with 214609(Anti-RAB6C Antibody) at dilution 1/45.



The image on the left is immunohistochemistry of paraffin-embedded Human breast cancer tissue using 214609(Anti-RAB6C Antibody) at a dilution of 1/45.



In comparison with the IHC on the left, the same paraffin-embedded Human breast cancer tissue is first treated with synthetic peptide and then with D162096(Anti-RAB6C Antibody) at dilution 1/45.



Product Description

Pioneering GTPase and Oncogene Product Development since 2010
