

RAB5C RABBIT MAB

货号: N261619

产品全名: Rab5C 兔单克隆抗体

基因符号 Ras-related protein Rab-5C; RABL; LI880; RAB5L; RAB5CL

UNIPROT ID: P51148

背景: Protein transport.

抗原: Recombinant protein of human RAB5C

经过测试的应用: WB,IHC-F,IHC-P,ICC/IF

推荐稀释比: WB: 1/500-1/1000 IHC: 1/50-1/100 IF: 1/50-1/200

种属反应性: Rabbit

克隆性: Rabbit Monoclonal

克隆编号: R04-3B7

分子量: Calculated MW: 23 kDa; Observed MW: 23 kDa

亚型: IgG

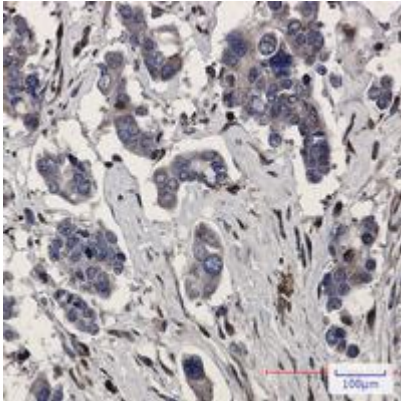
纯化: Affinity Purified

种属反应性: Human, Mouse and Rat

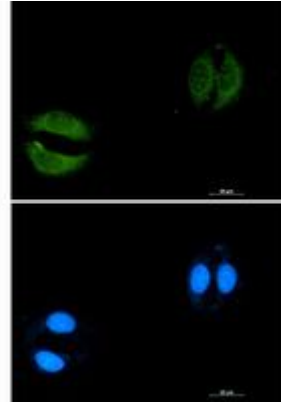
成分: PBS (without Mg²⁺ and Ca²⁺), pH 7.3 containing 50% glycerol, 0.5% BSA and 0.02% sodium azide

研究领域: Signal Transduction

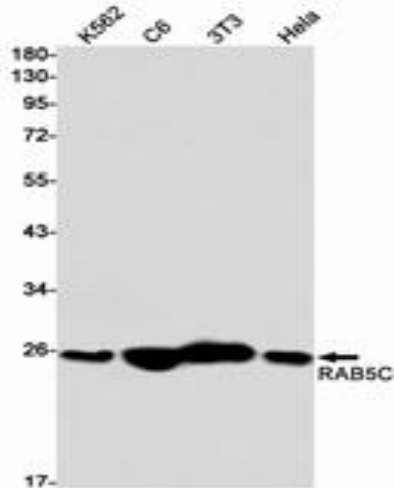
储存和运输: Store at -20°C. Avoid repeated freezing and thawing



Immunohistochemistry analysis of paraffin-embedded Human Cholangiocarcinoma using RAB5C antibody. High-pressure and temperature Sodium Citrate pH 6.0 was used for antigen retrieval.



Immunocytochemistry analysis of Rab5C (green) in A549 using Rab5C antibody, and DAPI (blue).



Western blot analysis of RAB5C in K562, C6, 3T3, HeLa lysates using RAB5C antibody.