

## RAB41 RABBIT PAB

货号: S219630

产品全名: RAB41 兔多抗

基因符号

**UNIPROT ID:** Q5JT25 (Gene Accession - NP\_001027898)

**背景:** This gene encodes a small GTP-binding protein that belongs to the largest family within the Ras superfamily. These proteins function as regulators of membrane trafficking. They cycle between inactive GDP-bound and activated GTP-bound states, which is controlled by GTP hydrolysis-activating proteins (GAPs). This family member can be activated by the GAP protein RN-Tre, and it is localized to the Golgi complex.

**抗原:** Synthetic peptide of human RAB41

**经过测试的应用:** ELISA, IHC

**推荐稀释比:** IHC: 50-200; ELISA: 1000-5000

**种属反应性:** Rabbit

**克隆性:** Rabbit Polyclonal

**亚型:** Immunogen-specific rabbit IgG

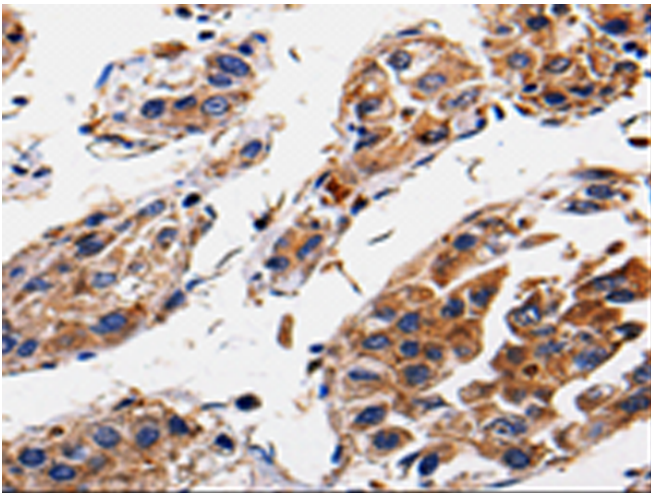
**纯化:** Antigen affinity purification

**种属反应性:** Human

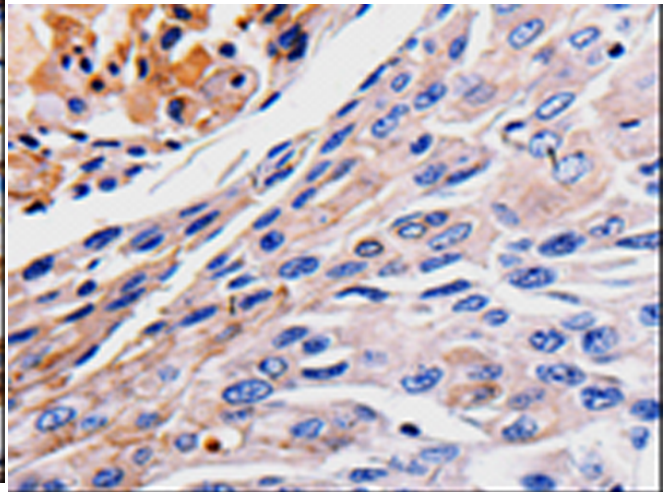
**成分:** PBS (without Mg<sup>2+</sup> and Ca<sup>2+</sup>), pH 7.4, 150 mM NaCl, 0.05% Sodium Azide and 40% glycerol

**研究领域:** Signal Transduction

**储存和运输:** Store at -20°C. Avoid repeated freezing and thawing



Immunohistochemistry analysis of paraffin-embedded Human gastric cancer tissue using 219630(RAB41 Antibody) at a dilution of 1/60(Cytoplasm).



Immunohistochemistry analysis of paraffin-embedded Human liver cancer tissue using 219630(Anti-RAB41 Antibody) at a dilution of 1/60.