

## RAB3D RABBIT PAB

货号: S213358

产品全名: RAB3D 兔多抗

基因符号: GOV; D2-2; RAB16; RAD3D

**UNIPROT ID:** O95716 (Gene Accession - NP\_004274)

背景: Protein transport. Probably involved in regulated exocytosis (By similarity).

抗原: Synthetic peptide of human RAB3D

经过测试的应用: ELISA, IHC

推荐稀释比: IHC: 25-100; ELISA: 1000-10000

种属反应性: Rabbit

克隆性: Rabbit Polyclonal

亚型: Immunogen-specific rabbit IgG

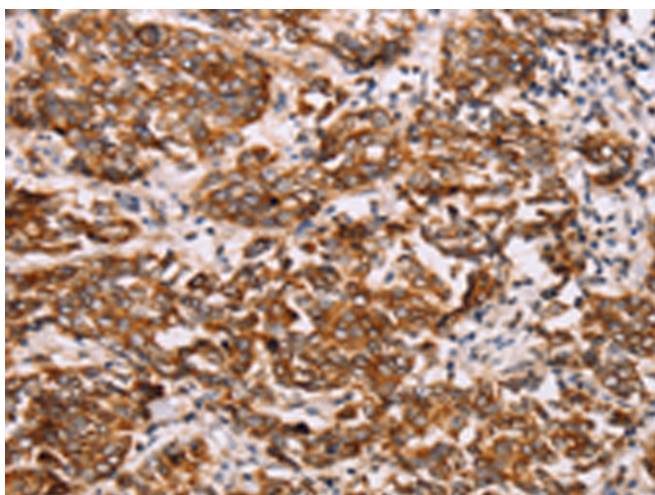
纯化: Antigen affinity purification

种属反应性: Human, Mouse, Rat

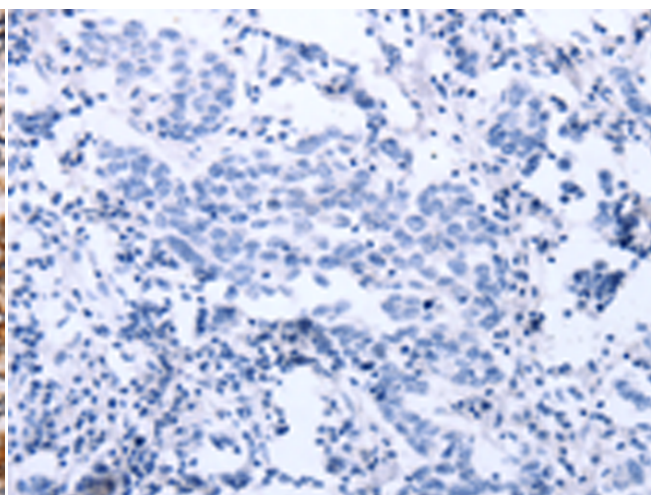
成分: PBS (without Mg<sup>2+</sup> and Ca<sup>2+</sup>), pH 7.4, 150 mM NaCl, 0.05% Sodium Azide and 40% glycerol

研究领域: Signal Transduction

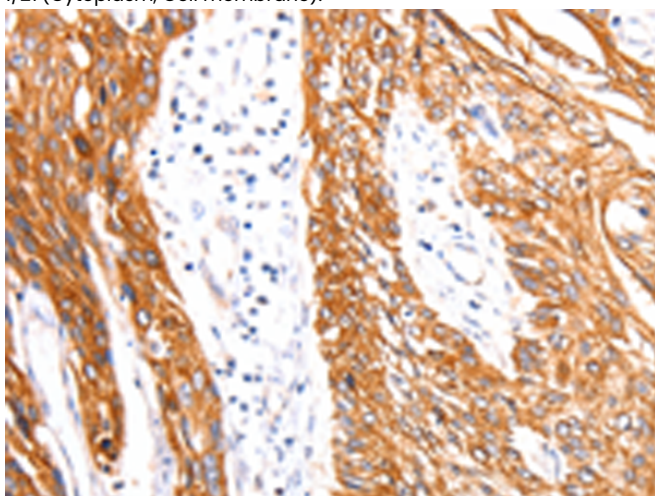
储存和运输: Store at -20°C. Avoid repeated freezing and thawing



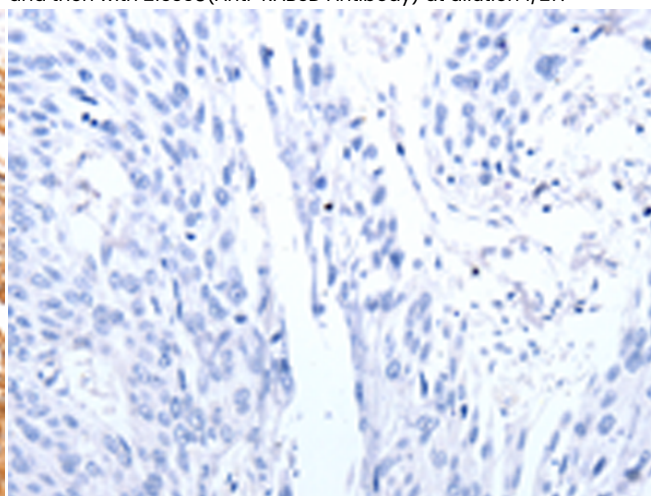
Immunohistochemistry analysis of paraffin embedded Human breast cancer tissue using 213358(RAB3D Antibody) at a dilution of 1/27(Cytoplasm, Cell membrane).



In comparison with the IHC on the left, the same paraffin-embedded Human breast cancer tissue is first treated with the synthetic peptide and then with 213358(Anti-RAB3D Antibody) at dilution 1/27.



The image on the left is immunohistochemistry of paraffin-embedded Human esophagus cancer tissue using 213358(Anti-RAB3D Antibody) at a dilution of 1/27.



In comparison with the IHC on the left, the same paraffin-embedded Human esophagus cancer tissue is first treated with synthetic peptide and then with 213358(Anti-RAB3D Antibody) at dilution 1/27.



# Product Description

Pioneering GTPase and Oncogene Product Development since 2010

---