

RAB3C RABBIT PAB

货号: S219640

产品全名: RAB3C 兔多抗

基因符号

UNIPROT ID: Q96E17 (Gene Accession - NP_612462)

背景: This gene is a member of the RAS oncogene family and encodes a small GTPase. Other similar small GTPases are known to be involved in vesicle trafficking, and the encoded protein was shown to play a role in recycling phagocytosed MHC class I complexes to the cell surface. Two transcript variants encoding different isoforms have been found for this gene.

抗原: Synthetic peptide of human RAB3C

经过测试的应用: ELISA, WB, IHC

推荐稀释比: IHC: 25-100;WB: 500-2000;ELISA: 2000-10000

种属反应性: Rabbit

克隆性: Rabbit Polyclonal

亚型: Immunogen-specific rabbit IgG

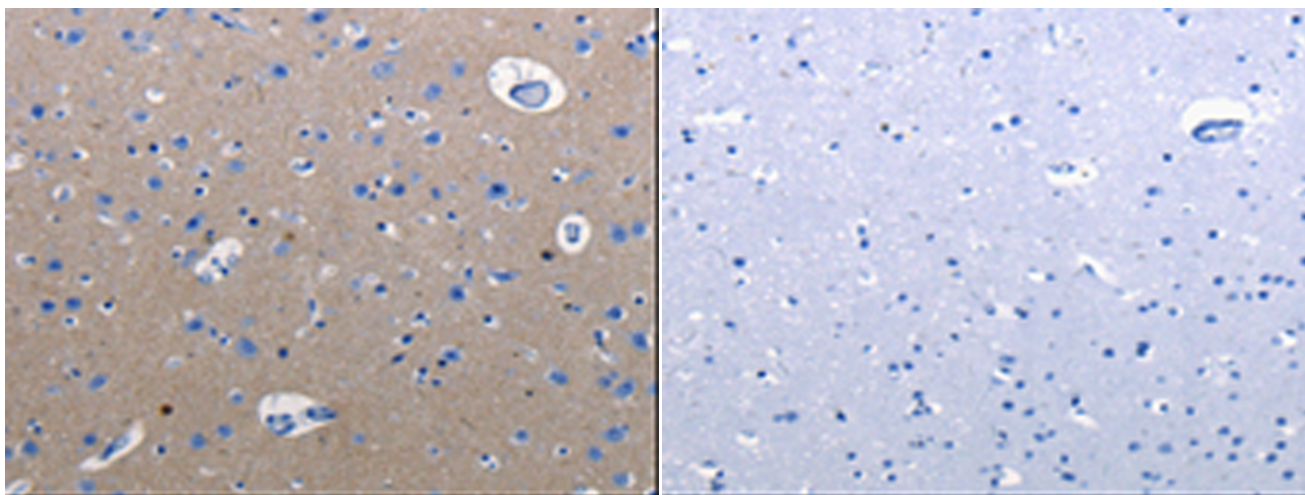
纯化: Antigen affinity purification

种属反应性: Human, Mouse, Rat

成分: PBS (without Mg²⁺ and Ca²⁺), pH 7.4, 150 mM NaCl, 0.05% Sodium Azide and 40% glycerol

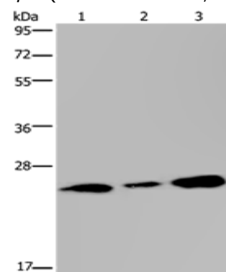
研究领域: Signal Transduction

储存和运输: Store at -20°C. Avoid repeated freezing and thawing



Immunohistochemistry analysis of paraffin embedded Human cervical cancer tissue using 219640(RAB3C Antibody) at a dilution of 1/25(Cell membrane, Cytoplasm).

In comparison with the IHC on the left, the same paraffin-embedded Human cervical cancer tissue is first treated with the synthetic peptide and then with 219640(Anti-RAB3C Antibody) at dilution 1/25.



Gel: 10%SDS-PAGE, Lysate: 40 µg;

Lane 1-2: Human fetal brain tissue, 293T cells;

Primary antibody: 219640(RAB3C Antibody) at dilution 1/400;

Secondary antibody: Goat anti rabbit IgG at 1/8000 dilution;

Exposure time: 1 minute