

RAB39B RABBIT PAB

货号: S220747

产品全名: RAB39B 兔多抗

基因符号: MRX72

UNIPROT ID: Q96DA2 (Gene Accession - NP_741995)

背景: This gene encodes a member of the Rab family of proteins. Rab proteins are small GTPases that are involved in vesicular trafficking. Mutations in this gene are associated with X-linked mental retardation.

抗原: Synthetic peptide of human RAB39B

经过测试的应用: ELISA, IHC

推荐稀释比: IHC: 50-200; ELISA: 2000-5000

种属反应性: Rabbit

克隆性: Rabbit Polyclonal

亚型: Immunogen-specific rabbit IgG

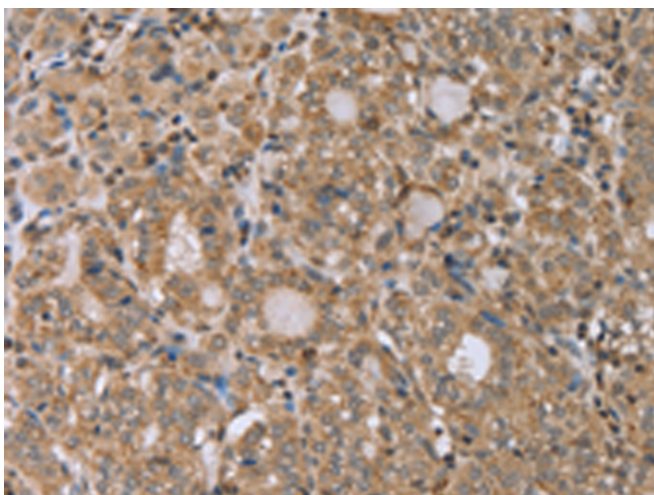
纯化: Antigen affinity purification

种属反应性: Human, Mouse

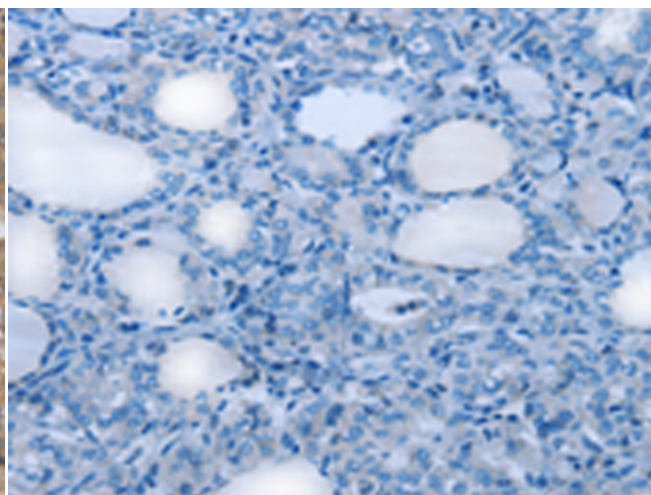
成分: PBS (without Mg²⁺ and Ca²⁺), pH 7.4, 150 mM NaCl, 0.05% Sodium Azide and 40% glycerol

研究领域: Signal Transduction

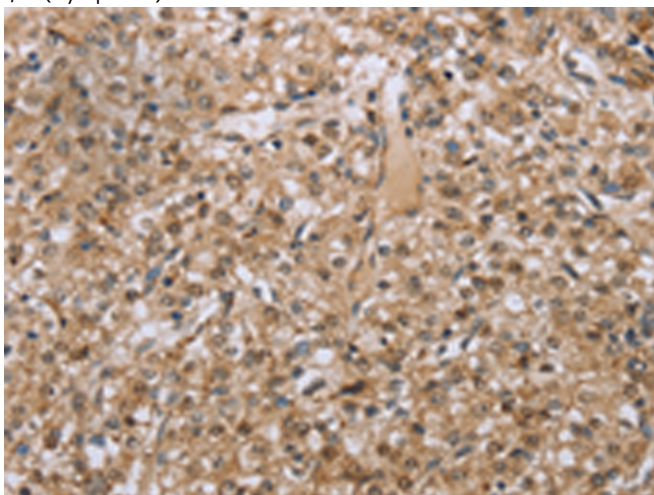
储存和运输: Store at -20°C. Avoid repeated freezing and thawing



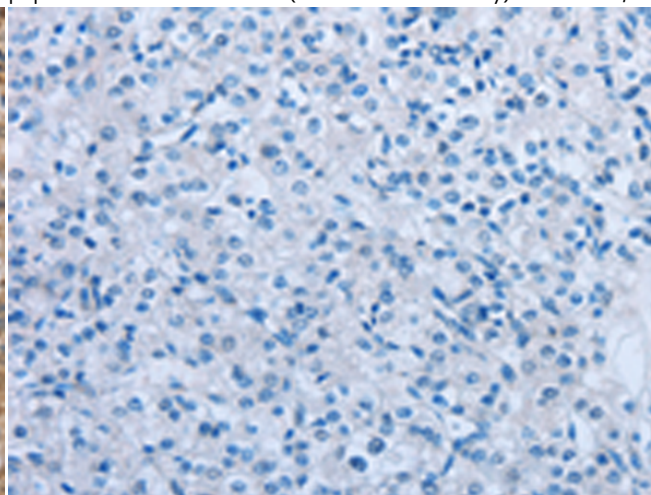
Immunohistochemistry analysis of paraffin embedded Human thyroid cancer tissue using 220747(RAB39B Antibody) at a dilution of 1/45(Cytoplasm).



In comparison with the IHC on the left, the same paraffin-embedded Human thyroid cancer tissue is first treated with the synthetic peptide and then with 220747(Anti-RAB39B Antibody) at dilution 1/45.



The image on the left is immunohistochemistry of paraffin-embedded Human prostate cancer tissue using 220747(Anti-RAB39B Antibody) at a dilution of 1/45.



In comparison with the IHC on the left, the same paraffin-embedded Human prostate cancer tissue is first treated with synthetic peptide and then with D261954(Anti-RAB39B Antibody) at dilution 1/45.



Product Description

Pioneering GTPase and Oncogene Product Development since 2010
