

RAB39A RABBIT PAB

货号: S219629

产品全名: RAB39A 兔多抗

基因符号 RAB39

UNIPROT ID: Q14964 (Gene Accession - NP_059986)

背景: This gene encodes a protein which is a member of the Rab family. The Rab family of proteins is a member of the Ras superfamily of monomeric G proteins.[1] Approximately 70 types of Rabs have now been identified in humans. Rab GTPases regulate many steps of membrane traffic, including vesicle formation, vesicle movement along actin and tubulin networks, and membrane fusion. These processes make up the route through which cell surface proteins are trafficked from the Golgi to the plasma membrane and are recycled. Surface protein recycling returns proteins to the surface whose function involves carrying another protein or substance inside the cell, such as the transferrin receptor, or serves as a means of regulating the number of a certain type of protein molecules on the surface.

抗原: Synthetic peptide of human RAB39A

经过测试的应用: ELISA, IHC

推荐稀释比: IHC: 25-50; ELISA: 1000-2000

种属反应性: Rabbit

克隆性: Rabbit Polyclonal

亚型: Immunogen-specific rabbit IgG

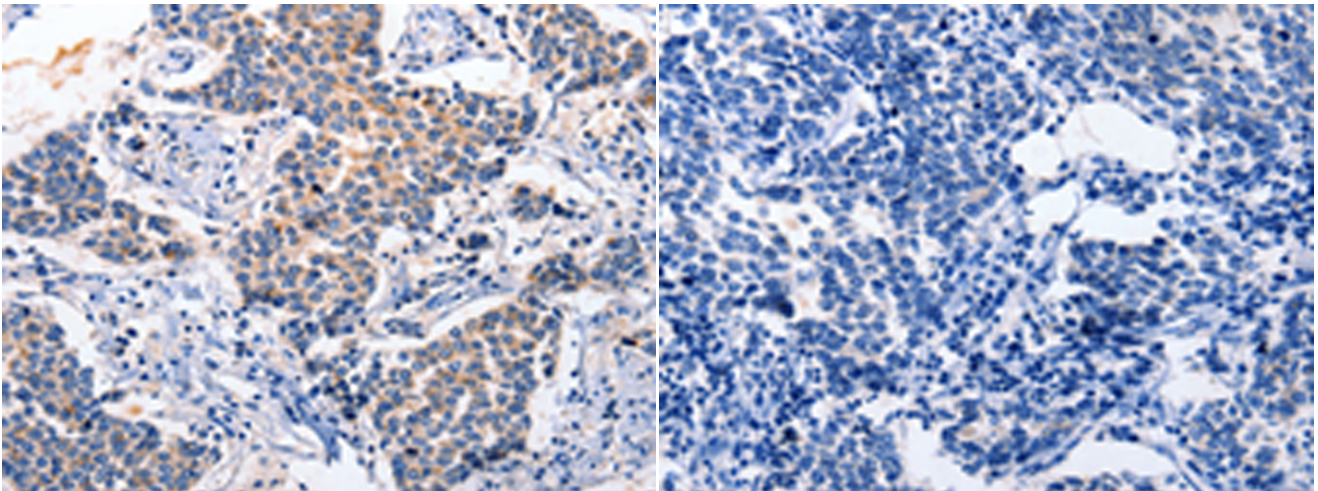
纯化: Antigen affinity purification

种属反应性: Human, Mouse

成分: PBS (without Mg²⁺ and Ca²⁺), pH 7.4, 150 mM NaCl, 0.05% Sodium Azide and 40% glycerol

研究领域: Signal Transduction

储存和运输: Store at -20°C. Avoid repeated freezing and thawing



Immunohistochemistry analysis of paraffin embedded Human breast cancer tissue using 219629(RAB39A Antibody) at a dilution of 1/5(Cytoplasm).

In comparison with the IHC on the left, the same paraffin-embedded Human breast cancer tissue is first treated with the synthetic peptide and then with 219629(Anti-RAB39A Antibody) at dilution 1/5.