

## RAB38 RABBIT PAB

货号: S219262

产品全名: RAB38 兔多抗

基因符号: rrGTPbp; NY-MEL-1

**UNIPROT ID:** P57729 (Gene Accession - BC015808)

**背景:** May be involved in melanosomal transport and docking. Involved in the proper sorting of TYRP1. Involved in peripheral melanosomal distribution of TYRP1 in melanocytes; the function, which probably is implicating vesicle-trafficking, includes cooperation with ANKRD27 and VAMP7 (By similarity). Plays a role in the maturation of phagosomes that engulf pathogens, such as S.aureus and M.tuberculosis (PubMed:21255211). Plays an important role in the control of melanin production and melanosome biogenesis (PubMed:23084991). In concert with RAB32, regulates the proper trafficking of melanogenic enzymes TYR, TYRP1 and DCT/TYRP2 to melanosomes in melanocytes (By similarity).

**抗原:** Fusion protein of human RAB38

**经过测试的应用:** ELISA, WB, IHC

**推荐稀释比:** IHC: 50-200;WB: 500-2000;ELISA: 5000-10000

**种属反应性:** Rabbit

**克隆性:** Rabbit Polyclonal

**亚型:** Immunogen-specific rabbit IgG

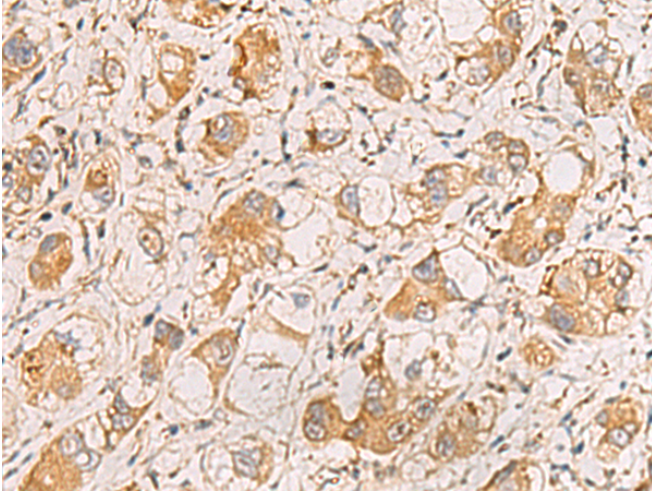
**纯化:** Antigen affinity purification

**种属反应性:** Human, Mouse

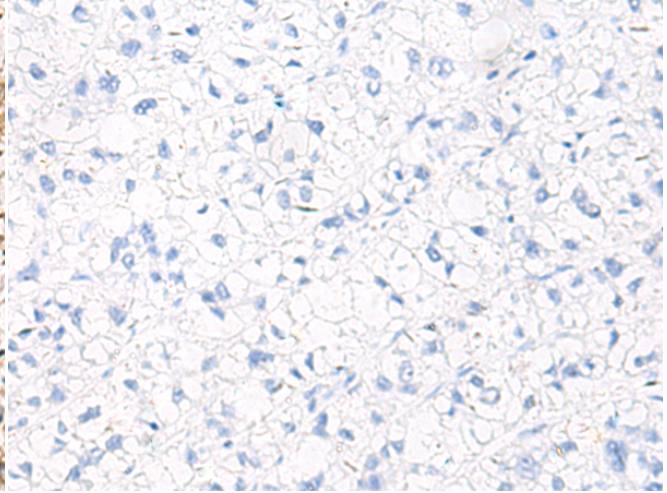
**成分:** PBS (without Mg<sup>2+</sup> and Ca<sup>2+</sup>), pH 7.4, 150 mM NaCl, 0.05% Sodium Azide and 40% glycerol

**研究领域:** Signal Transduction

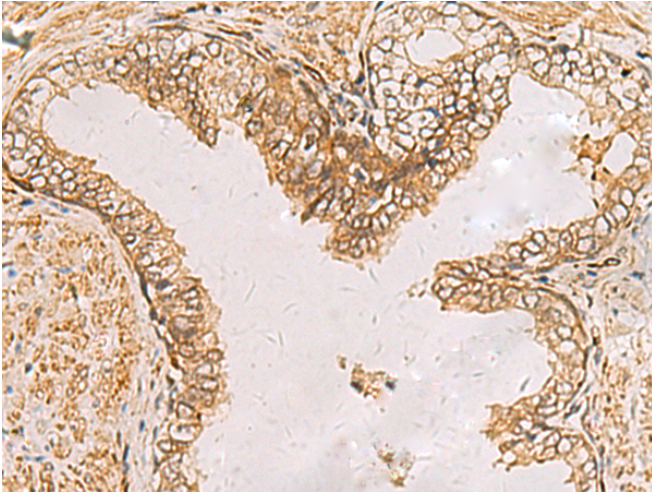
**储存和运输:** Store at -20°C. Avoid repeated freezing and thawing



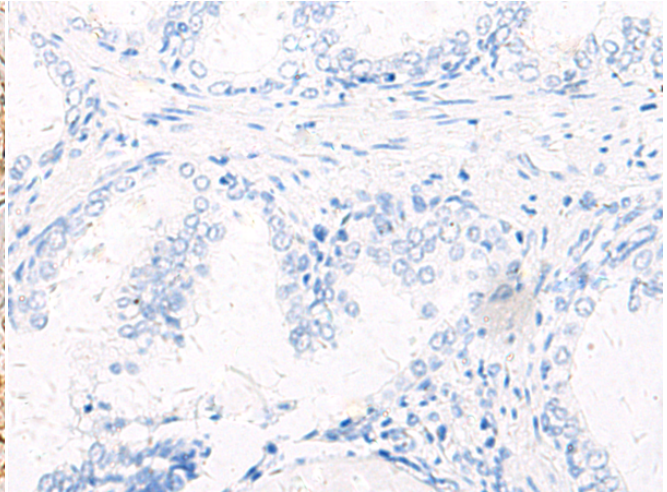
Immunohistochemistry analysis of paraffin embedded Human liver cancer tissue using 219262(RAB38 Antibody) at a dilution of 1/60(Cytoplasm).



In comparison with the IHC on the left, the same paraffin-embedded Human liver cancer tissue is first treated with the fusion protein and then with 219262(Anti-RAB38 Antibody) at dilution 1/60.

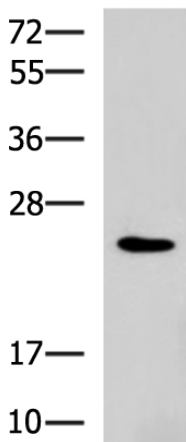


The image on the left is immunohistochemistry of paraffin-embedded Human prostate cancer tissue using 219262(Anti-RAB38 Antibody) at a dilution of 1/60.



In comparison with the IHC on the left, the same paraffin-embedded Human prostate cancer tissue is first treated with fusion protein and then with D226148(Anti-RAB38 Antibody) at dilution 1/60.

kDa



Gel: 12%SDS-PAGE, Lysate: 40 µg;  
 Lane: NIH/3T3 cell lysate;  
 Primary antibody: 219262(RAB38 Antibody) at dilution 1/900;  
 Secondary antibody: HRP-conjugated Goat anti rabbit IgG at 1/5000 dilution;  
 Exposure time: 1 minute



# Product Description

Pioneering GTPase and Oncogene Product Development since 2010

---