

RAB2B RABBIT PAB

货号: N225501

产品全名: Rab2B 兔多抗

基因符号 Ras-related protein Rab-2B

UNIPROT ID: Q8WUDI

背景: Required for protein transport from the endoplasmic reticulum to the Golgi complex.

抗原: The antiserum was produced against synthesized peptide derived from human RAB2B. AA range:103-152

经过测试的应用: WB,ELISA

推荐稀释比: WB: 1/500-1/1000 ELISA: 1/10000

种属反应性: Rabbit

克隆性: Rabbit Polyclonal

分子量: Calculated MW: 24 kDa; Observed MW: 24 kDa

亚型: IgG

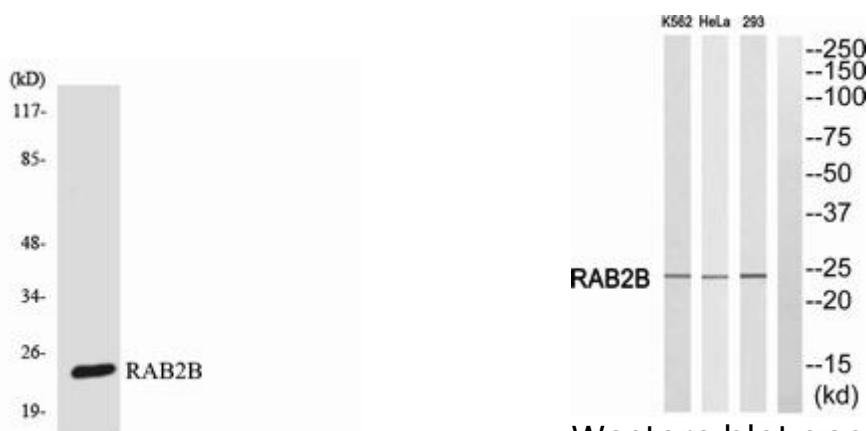
纯化: Affinity Chromatography

种属反应性: Human, Mouse and Rat

成分: PBS (without Mg²⁺ and Ca²⁺), pH 7.3 containing 50% glycerol, 0.5% BSA and 0.02% sodium azide

研究领域: Signal Transduction

储存和运输: Store at -20°C. Avoid repeated freezing and thawing



Western blot analysis of Rab2B in 293 lysates using RAB2B antibody.

Western blot analysis of Rab2B in K562, HeLa, 293 lysates using RAB2B antibody. The lane on the right is blocked with the RAB2B peptide.



Product Description

Pioneering GTPase and Oncogene Product Development since 2010
