

RAB26 RABBIT PAB

货号: N225054

产品全名: Rab26 兔多抗

基因符号 RAB26; Ras-related protein Rab-26

UNIPROT ID: Q9ULW5

背景: The small GTPases Rab are key regulators of intracellular membrane trafficking, from the formation of transport vesicles to their fusion with membranes.

抗原: Synthesized peptide derived from Rab 26 . at AA range: 180-260

经过测试的应用: WB,IHC-P,ELISA

推荐稀释比: WB: 1/500-1/1000 IHC: 1/50-1/100 ELISA: 1/10000

种属反应性: Rabbit

克隆性: Rabbit Polyclonal

分子量: Calculated MW: 28 kDa; Observed MW: 28 kDa

亚型: IgG

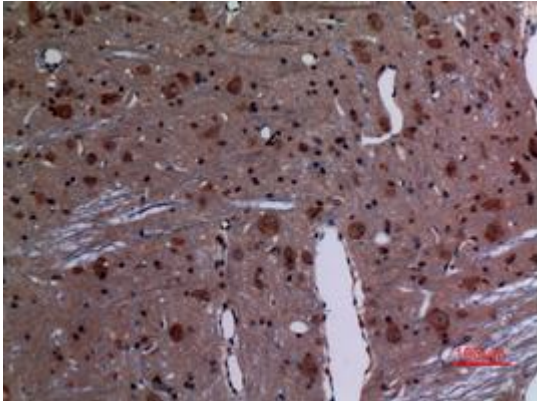
纯化: Affinity Purified

种属反应性: Human, Mouse and Rat

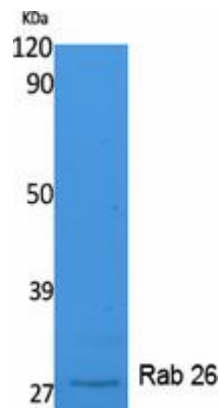
成分: PBS (without Mg²⁺ and Ca²⁺), pH 7.3 containing 50% glycerol, 0.5% BSA and 0.02% sodium azide

研究领域: Signal Transduction

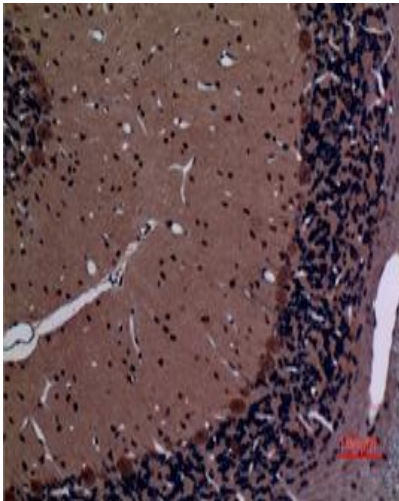
储存和运输: Store at -20°C. Avoid repeated freezing and thawing



Immunohistochemistry analysis of paraffin-embedded rat brain using Rab26 antibody. High-pressure and temperature Sodium Citrate pH 6.0 was used for antigen retrieval.



Western blot analysis of Rab26 in K562 lysates using Rab 26 antibody.



Immunohistochemistry analysis of paraffin-embedded rat brain using Rab26 antibody. High-pressure and temperature Sodium Citrate pH 6.0 was used for antigen retrieval.