

RAB25 RABBIT PAB

货号: S219626

产品全名: RAB25 兔多抗

基因符号 CATX-8, RAB11C

UNIPROT ID: P57735 (Gene Accession - NP_065120)

背景: RAB proteins, such as RAB25, are members of the RAS superfamily of small GTPases that are involved in membrane trafficking. Members of the RAB11 subfamily, including RAB25, control the return of internalized membrane-associated moieties to the cell surface.

抗原: Synthetic peptide of human RAB25

经过测试的应用: ELISA, IHC

推荐稀释比: IHC: 50-150; ELISA: 1000-5000

种属反应性: Rabbit

克隆性: Rabbit Polyclonal

亚型: Immunogen-specific rabbit IgG

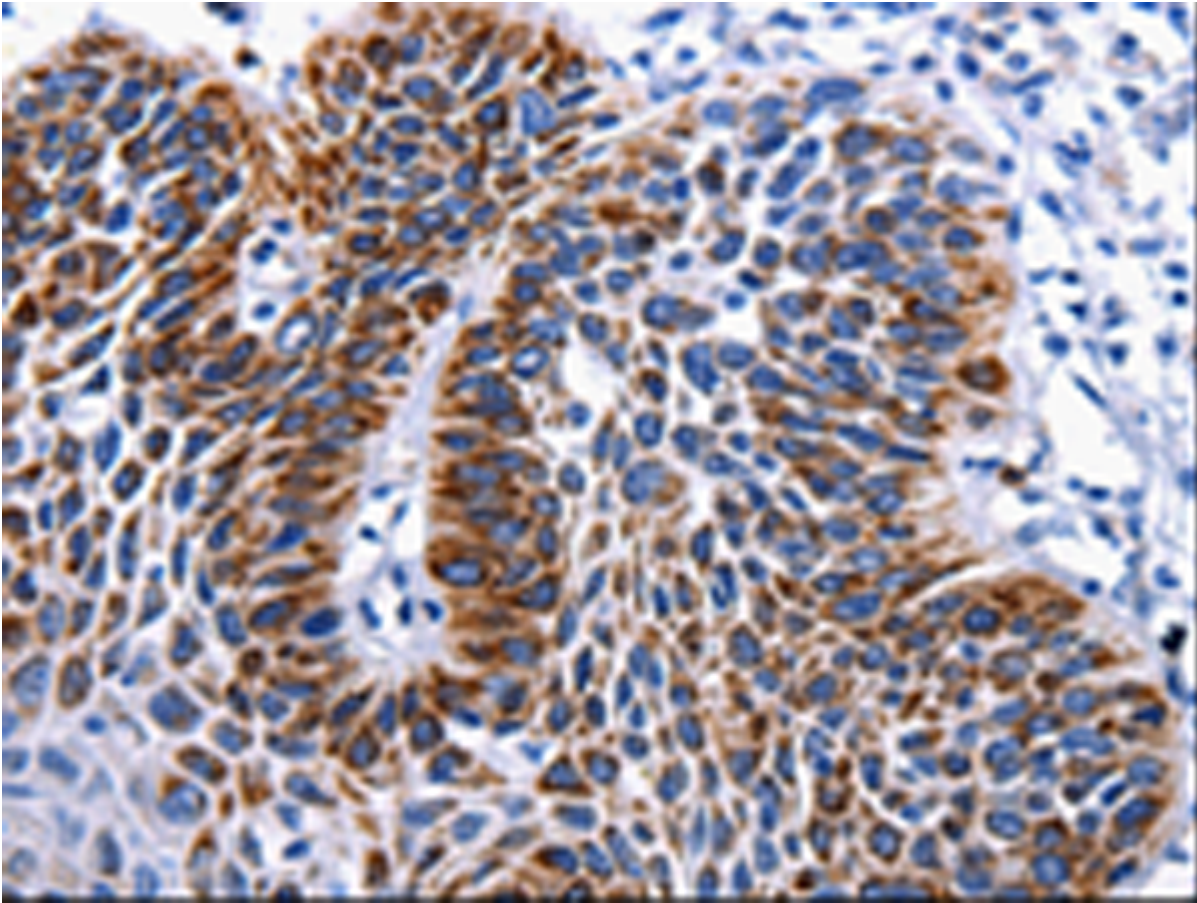
纯化: Antigen affinity purification

种属反应性: Human, Mouse

成分: PBS (without Mg²⁺ and Ca²⁺), pH 7.4, 150 mM NaCl, 0.05% Sodium Azide and 40% glycerol

研究领域: Signal Transduction, Cancer

储存和运输: Store at -20°C. Avoid repeated freezing and thawing



Immunohistochemistry analysis of paraffin-embedded Human liver cancer tissue using 219626(RAB25 Antibody) at a dilution of 1/50(Cell membrane, Cytoplasm).