

## RAB22A RABBIT PAB

货号: S219625

产品全名: RAB22A 兔多抗

基因符号

**UNIPROT ID:** Q9UL26 (Gene Accession - NP\_065724 )

**背景:** The protein encoded by this gene is a member of the RAB family of small GTPases. The GTP-bound form of the encoded protein has been shown to interact with early-endosomal antigen 1, and may be involved in the trafficking of and interaction between endosomal compartments.

**抗原:** Synthetic peptide of human RAB22A

**经过测试的应用:** ELISA, WB, IHC

**推荐稀释比:** IHC: 50-200;WB: 200-1000;ELISA: 1000-5000

**种属反应性:** Rabbit

**克隆性:** Rabbit Polyclonal

**亚型:** Immunogen-specific rabbit IgG

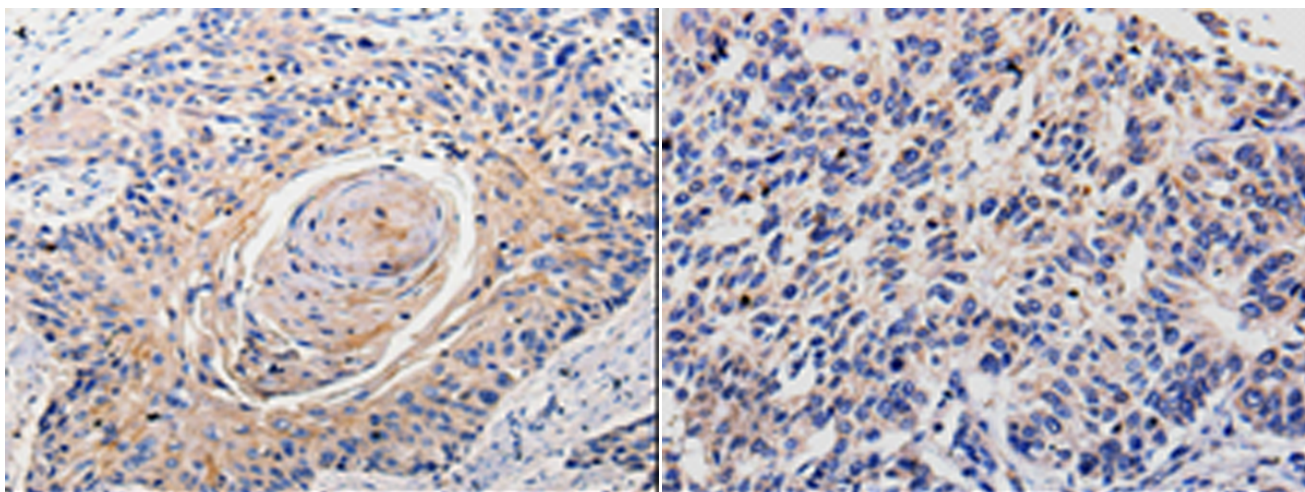
**纯化:** Antigen affinity purification

**种属反应性:** Human, Mouse

**成分:** PBS (without Mg<sup>2+</sup> and Ca<sup>2+</sup>), pH 7.4, 150 mM NaCl, 0.05% Sodium Azide and 40% glycerol

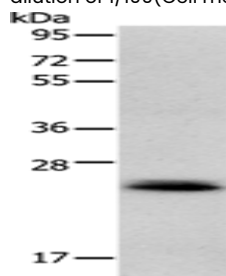
**研究领域:** Signal Transduction

**储存和运输:** Store at -20°C. Avoid repeated freezing and thawing



Immunohistochemistry analysis of paraffin-embedded Human esophagus cancer tissue using 219625 (RAB22A Antibody) at a dilution of 1/100 (Cell membrane, Cytoplasm).

Immunohistochemistry analysis of paraffin-embedded Human lung cancer tissue using 219625 (Anti-RAB22A Antibody) at a dilution of 1/100.



Gel: 12%SDS-PAGE, Lysate: 40 µg;

Lane: Mouse heart tissue;

Primary antibody: 219625 (RAB22A Antibody) at dilution 1/300;

Secondary antibody: Goat anti rabbit IgG at 1/8000 dilution;

Exposure time: 10 seconds